



# Test Report

Report No: BTT20220526836RR-1

Date: May. 28, 2022

Page 1 of 43

**Applicant** : Zhongshan Shihong Lighting Co., Ltd.

**Address** : No.2 Card, No.194, North East Bank Road, Zhenhaizhou, Guzhen Town, Zhongshan City, Guangdong Province, China

The Following Sample(S) Was /Were Submitted And Identified On Behalf Of The Clients As:

**Sample Name** : LED Surface-mounted Magnetic-suction Tracklight

**Trade** : N/A

**Sample Model** : G20-GL24, M15-FL30, M15-FL60, M15-FL90, M15-FL1200, M15-GL06, M15-GL12, M15-CG06, M15-CG12, M15-SP30, M15-SP40, M15-SP30L, M15-LG80, M15-SP75, S16-FL30, S16-FL60, S16-FL90, S16-GL08, S16-GL16, S16-GL32, S16-AG08, S16-AG16, S16-SP30, S16-SP40, S16-SU01, S16-SU02, G20-FL30, G20-FL60, G20-FL90, G20-GL06, G20-GL12, G20-AG06, G20-AG12, G20-SP40, G20-SP50, G20-SU30, G20-SU50, G20-SP60

**Sample Received Date** : May. 25, 2022

**Testing Period** : May. 25, 2022 To May. 28, 22

**Test Requested** : Selected Test (S) In The Selected Parts As Requested By Client With The EU Directive 2002/95/EC (Latest Directive 2011/65/EU) On The Restriction Of Hazardous Substances And Commission Decision 2005/618/EC-(RoHS Directive)

**Test Method** : Please Refer To Next Page(S).

**Test Result** : Please Refer To Next Page(S).

# RoHS

Signed For And On Behalf Of



Bard Liu / Technical Director



# Test Report

Report No: BTT20220526836RR-1

Date: May. 28, 2022

Page 2 of 43

## Sample Description:

No.	Description	Name		
1	Plastic	Input/Output	Black line	
2	Plastic		Blue line	
3	Plastic		Brown line	
4	Plastic		Yellow green line	
5	Plastic		White line	
6	Plastic		Red line	
7	Metal		Copper wire	
8	Plastic	LED driver	Black plastic shell	
9	Metal		Metal shell	
10	Plastic		Blue plastic end cover	
11	Metal		Solder	
12	All material		PCB	
13	All material		Resistance	
14	All material		Capacitance	
15	All material		Transformer	Green tape
16	Plastic			Black plastic
17	Metal			Copper wire
18	All material		IC	
19	All material		Diode	
20	All material		Terminal block	
21	Metal	Conductor Shrapnel		
22	Plastic	Black jacket		
23	Plastic	Black plastic parts		
24	Metal	Black metal body		



# Test Report

Report No: BTT20220526836RR-1

Date: May. 28, 2022

Page 3 of 43

25	Metal	Electroplated metal parts
26	All material	LED module
27	Plastic	LED fixing bracket
28	Plastic	Translucent cover
29	All material	LED lamp beads
30	Metal	Aluminum base circuit board
31	Metal	Aluminum strip light body
32	All material	Black paint



# Test Report

Report No: BTT20220526836RR-1

Date: May. 28, 2022

Page 4 of 43

## Test Result (No.1):

Test Item(S)	Unit	Test Method (Reference)	Result	MDL	Limit
Cadmium(Cd)	Mg/Kg	IEC 62321 series, ICP-OES	N.D.	2	100
Lead(Pb)	Mg/Kg	IEC 62321 series, ICP-OES	N.D.	2	1000
Mercury(Hg)	Mg/Kg	IEC 62321 series, ICP-OES	N.D.	2	1000
Hexavalent Chromium(Crvi)	Mg/Kg	IEC 62321 series, UV-Vis	N.D.	2	1000
<b>Sum Of Pbbs</b>	<b>Mg/Kg</b>	<b>IEC 62321 series, GC-MS</b>	N.D.	--	<b>1000</b>
Monobromobiphenyl	Mg/Kg	IEC 62321 series, GC-MS	N.D.	5	--
Dibromobiphenyl	Mg/Kg	IEC 62321 series, GC-MS	N.D.	5	--
Tribromobiphenyl	Mg/Kg	IEC 62321 series, GC-MS	N.D.	5	--
Tetrabromobiphenyl	Mg/Kg	IEC 62321 series, GC-MS	N.D.	5	--
Pentabromobiphenyl	Mg/Kg	IEC 62321 series, GC-MS	N.D.	5	--
Hexabromobiphenyl	Mg/Kg	IEC 62321 series, GC-MS	N.D.	5	--
Heptabromobiphenyl	Mg/Kg	IEC 62321 series, GC-MS	N.D.	5	--
Octabromobiphenyl	Mg/Kg	IEC 62321 series, GC-MS	N.D.	5	--
Nonabromobiphenyl	Mg/Kg	IEC 62321 series, GC-MS	N.D.	5	--
Decabromobiphenyl	Mg/Kg	IEC 62321 series, GC-MS	N.D.	5	--
<b>Sum Of Pbdes</b>	<b>Mg/Kg</b>	<b>IEC 62321 series, GC-MS</b>	N.D.	--	<b>1000</b>
Monobromodiphenyl Ether	Mg/Kg	IEC 62321 series, GC-MS	N.D.	5	--
Dibromodiphenyl Ether	Mg/Kg	IEC 62321 series, GC-MS	N.D.	5	--
Tribromodiphenyl Ether	Mg/Kg	IEC 62321 series, GC-MS	N.D.	5	--
Tetrabromodiphenyl Ether	Mg/Kg	IEC 62321 series, GC-MS	N.D.	5	--
Pentabromodiphenyl Ether	Mg/Kg	IEC 62321 series, GC-MS	N.D.	5	--
Hexabromodiphenyl Ether	Mg/Kg	IEC 62321 series, GC-MS	N.D.	5	--
Heptabromodiphenyl Ether	Mg/Kg	IEC 62321 series, GC-MS	N.D.	5	--
Octabromodiphenyl Ether	Mg/Kg	IEC 62321 series, GC-MS	N.D.	5	--
Nonabromodiphenyl Ether	Mg/Kg	IEC 62321 series, GC-MS	N.D.	5	--
Decabromodiphenyl Ether	Mg/Kg	IEC 62321 series, GC-MS	N.D.	5	--
<b>Priority view to further restrictions of substances</b>					
Dibutyl Phthalate(DBP)	mg/kg	IEC 62321 series, GC-MS	N.D.	50	1000
Benzylbutyl Phthalate (BBP)	mg/kg	IEC 62321 series, GC-MS	N.D.	50	1000
Di-(2-ethylhexyl) Phthalate(DEHP)	mg/kg	IEC 62321 series, GC-MS	N.D.	50	1000
Diisobutyl Phthalate (DIBP)	mg/kg	IEC 62321 series, GC-MS	N.D.	50	1000



# Test Report

Report No: BTT20220526836RR-1

Date: May. 28, 2022

Page 5 of 43

## Test Result (No.2):

Test Item(S)	Unit	Test Method (Reference)	Result	MDL	Limit
Cadmium(Cd)	Mg/Kg	IEC 62321 series, ICP-OES	N.D.	2	100
Lead(Pb)	Mg/Kg	IEC 62321 series, ICP-OES	N.D.	2	1000
Mercury(Hg)	Mg/Kg	IEC 62321 series, ICP-OES	N.D.	2	1000
Hexavalent Chromium(Crvi)	Mg/Kg	IEC 62321 series, UV-Vis	N.D.	2	1000
<b>Sum Of Pbbs</b>	<b>Mg/Kg</b>	<b>IEC 62321 series, GC-MS</b>	<b>N.D.</b>	<b>--</b>	<b>1000</b>
Monobromobiphenyl	Mg/Kg	IEC 62321 series, GC-MS	N.D.	5	--
Dibromobiphenyl	Mg/Kg	IEC 62321 series, GC-MS	N.D.	5	--
Tribromobiphenyl	Mg/Kg	IEC 62321 series, GC-MS	N.D.	5	--
Tetrabromobiphenyl	Mg/Kg	IEC 62321 series, GC-MS	N.D.	5	--
Pentabromobiphenyl	Mg/Kg	IEC 62321 series, GC-MS	N.D.	5	--
Hexabromobiphenyl	Mg/Kg	IEC 62321 series, GC-MS	N.D.	5	--
Heptabromobiphenyl	Mg/Kg	IEC 62321 series, GC-MS	N.D.	5	--
Octabromobiphenyl	Mg/Kg	IEC 62321 series, GC-MS	N.D.	5	--
Nonabromobiphenyl	Mg/Kg	IEC 62321 series, GC-MS	N.D.	5	--
Decabromobiphenyl	Mg/Kg	IEC 62321 series, GC-MS	N.D.	5	--
<b>Sum Of Pbdes</b>	<b>Mg/Kg</b>	<b>IEC 62321 series, GC-MS</b>	<b>N.D.</b>	<b>--</b>	<b>1000</b>
Monobromodiphenyl Ether	Mg/Kg	IEC 62321 series, GC-MS	N.D.	5	--
Dibromodiphenyl Ether	Mg/Kg	IEC 62321 series, GC-MS	N.D.	5	--
Tribromodiphenyl Ether	Mg/Kg	IEC 62321 series, GC-MS	N.D.	5	--
Tetrabromodiphenyl Ether	Mg/Kg	IEC 62321 series, GC-MS	N.D.	5	--
Pentabromodiphenyl Ether	Mg/Kg	IEC 62321 series, GC-MS	N.D.	5	--
Hexabromodiphenyl Ether	Mg/Kg	IEC 62321 series, GC-MS	N.D.	5	--
Heptabromodiphenyl Ether	Mg/Kg	IEC 62321 series, GC-MS	N.D.	5	--
Octabromodiphenyl Ether	Mg/Kg	IEC 62321 series, GC-MS	N.D.	5	--
Nonabromodiphenyl Ether	Mg/Kg	IEC 62321 series, GC-MS	N.D.	5	--
Decabromodiphenyl Ether	Mg/Kg	IEC 62321 series, GC-MS	N.D.	5	--
<b>Priority view to further restrictions of substances</b>					
Dibutyl Phthalate(DBP)	mg/kg	IEC 62321 series, GC-MS	N.D.	50	1000
Benzylbutyl Phthalate (BBP)	mg/kg	IEC 62321 series, GC-MS	N.D.	50	1000
Di-(2-ethylhexyl) Phthalate(DEHP)	mg/kg	IEC 62321 series, GC-MS	N.D.	50	1000
Diisobutyl Phthalate (DIBP)	mg/kg	IEC 62321 series, GC-MS	N.D.	50	1000



# Test Report

Report No: BTT20220526836RR-1

Date: May. 28, 2022

Page 6 of 43

## Test Result (No.3):

Test Item(S)	Unit	Test Method (Reference)	Result	MDL	Limit
Cadmium(Cd)	Mg/Kg	IEC 62321 series, ICP-OES	N.D.	2	100
Lead(Pb)	Mg/Kg	IEC 62321 series, ICP-OES	N.D.	2	1000
Mercury(Hg)	Mg/Kg	IEC 62321 series, ICP-OES	N.D.	2	1000
Hexavalent Chromium(Crvi)	Mg/Kg	IEC 62321 series, UV-Vis	N.D.	2	1000
<b>Sum Of Pbbs</b>	<b>Mg/Kg</b>	<b>IEC 62321 series, GC-MS</b>	<b>N.D.</b>	<b>--</b>	<b>1000</b>
Monobromobiphenyl	Mg/Kg	IEC 62321 series, GC-MS	N.D.	5	--
Dibromobiphenyl	Mg/Kg	IEC 62321 series, GC-MS	N.D.	5	--
Tribromobiphenyl	Mg/Kg	IEC 62321 series, GC-MS	N.D.	5	--
Tetrabromobiphenyl	Mg/Kg	IEC 62321 series, GC-MS	N.D.	5	--
Pentabromobiphenyl	Mg/Kg	IEC 62321 series, GC-MS	N.D.	5	--
Hexabromobiphenyl	Mg/Kg	IEC 62321 series, GC-MS	N.D.	5	--
Heptabromobiphenyl	Mg/Kg	IEC 62321 series, GC-MS	N.D.	5	--
Octabromobiphenyl	Mg/Kg	IEC 62321 series, GC-MS	N.D.	5	--
Nonabromobiphenyl	Mg/Kg	IEC 62321 series, GC-MS	N.D.	5	--
Decabromobiphenyl	Mg/Kg	IEC 62321 series, GC-MS	N.D.	5	--
<b>Sum Of Pbdes</b>	<b>Mg/Kg</b>	<b>IEC 62321 series, GC-MS</b>	<b>N.D.</b>	<b>--</b>	<b>1000</b>
Monobromodiphenyl Ether	Mg/Kg	IEC 62321 series, GC-MS	N.D.	5	--
Dibromodiphenyl Ether	Mg/Kg	IEC 62321 series, GC-MS	N.D.	5	--
Tribromodiphenyl Ether	Mg/Kg	IEC 62321 series, GC-MS	N.D.	5	--
Tetrabromodiphenyl Ether	Mg/Kg	IEC 62321 series, GC-MS	N.D.	5	--
Pentabromodiphenyl Ether	Mg/Kg	IEC 62321 series, GC-MS	N.D.	5	--
Hexabromodiphenyl Ether	Mg/Kg	IEC 62321 series, GC-MS	N.D.	5	--
Heptabromodiphenyl Ether	Mg/Kg	IEC 62321 series, GC-MS	N.D.	5	--
Octabromodiphenyl Ether	Mg/Kg	IEC 62321 series, GC-MS	N.D.	5	--
Nonabromodiphenyl Ether	Mg/Kg	IEC 62321 series, GC-MS	N.D.	5	--
Decabromodiphenyl Ether	Mg/Kg	IEC 62321 series, GC-MS	N.D.	5	--
<b>Priority view to further restrictions of substances</b>					
Dibutyl Phthalate(DBP)	mg/kg	IEC 62321 series, GC-MS	N.D.	50	1000
Benzylbutyl Phthalate (BBP)	mg/kg	IEC 62321 series, GC-MS	N.D.	50	1000
Di-(2-ethylhexyl) Phthalate(DEHP)	mg/kg	IEC 62321 series, GC-MS	N.D.	50	1000
Diisobutyl Phthalate (DIBP)	mg/kg	IEC 62321 series, GC-MS	N.D.	50	1000



# Test Report

Report No: BTT20220526836RR-1

Date: May. 28, 2022

Page 7 of 43

## Test Result (No.4):

Test Item(S)	Unit	Test Method (Reference)	Result	MDL	Limit
Cadmium(Cd)	Mg/Kg	IEC 62321 series, ICP-OES	N.D.	2	100
Lead(Pb)	Mg/Kg	IEC 62321 series, ICP-OES	N.D.	2	1000
Mercury(Hg)	Mg/Kg	IEC 62321 series, ICP-OES	N.D.	2	1000
Hexavalent Chromium(Crvi)	Mg/Kg	IEC 62321 series, UV-Vis	N.D.	2	1000
<b>Sum Of Pbbs</b>	<b>Mg/Kg</b>	<b>IEC 62321 series, GC-MS</b>	N.D.	--	<b>1000</b>
Monobromobiphenyl	Mg/Kg	IEC 62321 series, GC-MS	N.D.	5	--
Dibromobiphenyl	Mg/Kg	IEC 62321 series, GC-MS	N.D.	5	--
Tribromobiphenyl	Mg/Kg	IEC 62321 series, GC-MS	N.D.	5	--
Tetrabromobiphenyl	Mg/Kg	IEC 62321 series, GC-MS	N.D.	5	--
Pentabromobiphenyl	Mg/Kg	IEC 62321 series, GC-MS	N.D.	5	--
Hexabromobiphenyl	Mg/Kg	IEC 62321 series, GC-MS	N.D.	5	--
Heptabromobiphenyl	Mg/Kg	IEC 62321 series, GC-MS	N.D.	5	--
Octabromobiphenyl	Mg/Kg	IEC 62321 series, GC-MS	N.D.	5	--
Nonabromobiphenyl	Mg/Kg	IEC 62321 series, GC-MS	N.D.	5	--
Decabromobiphenyl	Mg/Kg	IEC 62321 series, GC-MS	N.D.	5	--
<b>Sum Of Pbdes</b>	<b>Mg/Kg</b>	<b>IEC 62321 series, GC-MS</b>	N.D.	--	<b>1000</b>
Monobromodiphenyl Ether	Mg/Kg	IEC 62321 series, GC-MS	N.D.	5	--
Dibromodiphenyl Ether	Mg/Kg	IEC 62321 series, GC-MS	N.D.	5	--
Tribromodiphenyl Ether	Mg/Kg	IEC 62321 series, GC-MS	N.D.	5	--
Tetrabromodiphenyl Ether	Mg/Kg	IEC 62321 series, GC-MS	N.D.	5	--
Pentabromodiphenyl Ether	Mg/Kg	IEC 62321 series, GC-MS	N.D.	5	--
Hexabromodiphenyl Ether	Mg/Kg	IEC 62321 series, GC-MS	N.D.	5	--
Heptabromodiphenyl Ether	Mg/Kg	IEC 62321 series, GC-MS	N.D.	5	--
Octabromodiphenyl Ether	Mg/Kg	IEC 62321 series, GC-MS	N.D.	5	--
Nonabromodiphenyl Ether	Mg/Kg	IEC 62321 series, GC-MS	N.D.	5	--
Decabromodiphenyl Ether	Mg/Kg	IEC 62321 series, GC-MS	N.D.	5	--
<b>Priority view to further restrictions of substances</b>					
Dibutyl Phthalate(DBP)	mg/kg	IEC 62321 series, GC-MS	N.D.	50	1000
Benzylbutyl Phthalate (BBP)	mg/kg	IEC 62321 series, GC-MS	N.D.	50	1000
Di-(2-ethylhexyl) Phthalate(DEHP)	mg/kg	IEC 62321 series, GC-MS	N.D.	50	1000
Diisobutyl Phthalate (DIBP)	mg/kg	IEC 62321 series, GC-MS	N.D.	50	1000





# Test Report

Report No: BTT20220526836RR-1

Date: May. 28, 2022

Page 8 of 43

## Test Result (No.5):

Test Item(S)	Unit	Test Method (Reference)	Result	MDL	Limit
Cadmium(Cd)	Mg/Kg	IEC 62321 series, ICP-OES	N.D.	2	100
Lead(Pb)	Mg/Kg	IEC 62321 series, ICP-OES	N.D.	2	1000
Mercury(Hg)	Mg/Kg	IEC 62321 series, ICP-OES	N.D.	2	1000
Hexavalent Chromium(Crvi)	Mg/Kg	IEC 62321 series, UV-Vis	N.D.	2	1000
<b>Sum Of Pbbs</b>	<b>Mg/Kg</b>	<b>IEC 62321 series, GC-MS</b>	N.D.	--	<b>1000</b>
Monobromobiphenyl	Mg/Kg	IEC 62321 series, GC-MS	N.D.	5	--
Dibromobiphenyl	Mg/Kg	IEC 62321 series, GC-MS	N.D.	5	--
Tribromobiphenyl	Mg/Kg	IEC 62321 series, GC-MS	N.D.	5	--
Tetrabromobiphenyl	Mg/Kg	IEC 62321 series, GC-MS	N.D.	5	--
Pentabromobiphenyl	Mg/Kg	IEC 62321 series, GC-MS	N.D.	5	--
Hexabromobiphenyl	Mg/Kg	IEC 62321 series, GC-MS	N.D.	5	--
Heptabromobiphenyl	Mg/Kg	IEC 62321 series, GC-MS	N.D.	5	--
Octabromobiphenyl	Mg/Kg	IEC 62321 series, GC-MS	N.D.	5	--
Nonabromobiphenyl	Mg/Kg	IEC 62321 series, GC-MS	N.D.	5	--
Decabromobiphenyl	Mg/Kg	IEC 62321 series, GC-MS	N.D.	5	--
<b>Sum Of Pbdes</b>	<b>Mg/Kg</b>	<b>IEC 62321 series, GC-MS</b>	N.D.	--	<b>1000</b>
Monobromodiphenyl Ether	Mg/Kg	IEC 62321 series, GC-MS	N.D.	5	--
Dibromodiphenyl Ether	Mg/Kg	IEC 62321 series, GC-MS	N.D.	5	--
Tribromodiphenyl Ether	Mg/Kg	IEC 62321 series, GC-MS	N.D.	5	--
Tetrabromodiphenyl Ether	Mg/Kg	IEC 62321 series, GC-MS	N.D.	5	--
Pentabromodiphenyl Ether	Mg/Kg	IEC 62321 series, GC-MS	N.D.	5	--
Hexabromodiphenyl Ether	Mg/Kg	IEC 62321 series, GC-MS	N.D.	5	--
Heptabromodiphenyl Ether	Mg/Kg	IEC 62321 series, GC-MS	N.D.	5	--
Octabromodiphenyl Ether	Mg/Kg	IEC 62321 series, GC-MS	N.D.	5	--
Nonabromodiphenyl Ether	Mg/Kg	IEC 62321 series, GC-MS	N.D.	5	--
Decabromodiphenyl Ether	Mg/Kg	IEC 62321 series, GC-MS	N.D.	5	--
<b>Priority view to further restrictions of substances</b>					
Dibutyl Phthalate(DBP)	mg/kg	IEC 62321 series, GC-MS	N.D.	50	1000
Benzylbutyl Phthalate (BBP)	mg/kg	IEC 62321 series, GC-MS	N.D.	50	1000
Di-(2-ethylhexyl) Phthalate(DEHP)	mg/kg	IEC 62321 series, GC-MS	N.D.	50	1000
Diisobutyl Phthalate (DIBP)	mg/kg	IEC 62321 series, GC-MS	N.D.	50	1000





# Test Report

Report No: BTT20220526836RR-1

Date: May. 28, 2022

Page 9 of 43

## Test Result (No.6):

Test Item(S)	Unit	Test Method (Reference)	Result	MDL	Limit
Cadmium(Cd)	Mg/Kg	IEC 62321 series, ICP-OES	N.D.	2	100
Lead(Pb)	Mg/Kg	IEC 62321 series, ICP-OES	N.D.	2	1000
Mercury(Hg)	Mg/Kg	IEC 62321 series, ICP-OES	N.D.	2	1000
Hexavalent Chromium(Crvi)	Mg/Kg	IEC 62321 series, UV-Vis	N.D.	2	1000
<b>Sum Of Pbbs</b>	<b>Mg/Kg</b>	<b>IEC 62321 series, GC-MS</b>	<b>N.D.</b>	<b>--</b>	<b>1000</b>
Monobromobiphenyl	Mg/Kg	IEC 62321 series, GC-MS	N.D.	5	--
Dibromobiphenyl	Mg/Kg	IEC 62321 series, GC-MS	N.D.	5	--
Tribromobiphenyl	Mg/Kg	IEC 62321 series, GC-MS	N.D.	5	--
Tetrabromobiphenyl	Mg/Kg	IEC 62321 series, GC-MS	N.D.	5	--
Pentabromobiphenyl	Mg/Kg	IEC 62321 series, GC-MS	N.D.	5	--
Hexabromobiphenyl	Mg/Kg	IEC 62321 series, GC-MS	N.D.	5	--
Heptabromobiphenyl	Mg/Kg	IEC 62321 series, GC-MS	N.D.	5	--
Octabromobiphenyl	Mg/Kg	IEC 62321 series, GC-MS	N.D.	5	--
Nonabromobiphenyl	Mg/Kg	IEC 62321 series, GC-MS	N.D.	5	--
Decabromobiphenyl	Mg/Kg	IEC 62321 series, GC-MS	N.D.	5	--
<b>Sum Of Pbdes</b>	<b>Mg/Kg</b>	<b>IEC 62321 series, GC-MS</b>	<b>N.D.</b>	<b>--</b>	<b>1000</b>
Monobromodiphenyl Ether	Mg/Kg	IEC 62321 series, GC-MS	N.D.	5	--
Dibromodiphenyl Ether	Mg/Kg	IEC 62321 series, GC-MS	N.D.	5	--
Tribromodiphenyl Ether	Mg/Kg	IEC 62321 series, GC-MS	N.D.	5	--
Tetrabromodiphenyl Ether	Mg/Kg	IEC 62321 series, GC-MS	N.D.	5	--
Pentabromodiphenyl Ether	Mg/Kg	IEC 62321 series, GC-MS	N.D.	5	--
Hexabromodiphenyl Ether	Mg/Kg	IEC 62321 series, GC-MS	N.D.	5	--
Heptabromodiphenyl Ether	Mg/Kg	IEC 62321 series, GC-MS	N.D.	5	--
Octabromodiphenyl Ether	Mg/Kg	IEC 62321 series, GC-MS	N.D.	5	--
Nonabromodiphenyl Ether	Mg/Kg	IEC 62321 series, GC-MS	N.D.	5	--
Decabromodiphenyl Ether	Mg/Kg	IEC 62321 series, GC-MS	N.D.	5	--
<b>Priority view to further restrictions of substances</b>					
Dibutyl Phthalate(DBP)	mg/kg	IEC 62321 series, GC-MS	N.D.	50	1000
Benzylbutyl Phthalate (BBP)	mg/kg	IEC 62321 series, GC-MS	N.D.	50	1000
Di-(2-ethylhexyl) Phthalate(DEHP)	mg/kg	IEC 62321 series, GC-MS	N.D.	50	1000
Diisobutyl Phthalate (DIBP)	mg/kg	IEC 62321 series, GC-MS	N.D.	50	1000



# Test Report

Report No: BTT20220526836RR-1

Date: May. 28, 2022

Page 10 of 43

## Test Result (No.7):

Test Item(S)	Unit	Test Method (Reference)	Result	MDL	Limit
Cadmium(Cd)	Mg/Kg	IEC 62321 series, ICP-OES	N.D.	2	100
Lead(Pb)	Mg/Kg	IEC 62321 series, ICP-OES	N.D.	2	1000
Mercury(Hg)	Mg/Kg	IEC 62321 series, ICP-OES	N.D.	2	1000
Hexavalent Chromium(Crvi)	Mg/Kg	IEC 62321 series, UV-Vis	N.D.	2	1000
<b>Sum Of Pbbs</b>	<b>Mg/Kg</b>	<b>IEC 62321 series, GC-MS</b>	<b>N.D.</b>	<b>--</b>	<b>1000</b>
Monobromobiphenyl	Mg/Kg	IEC 62321 series, GC-MS	N.D.	5	--
Dibromobiphenyl	Mg/Kg	IEC 62321 series, GC-MS	N.D.	5	--
Tribromobiphenyl	Mg/Kg	IEC 62321 series, GC-MS	N.D.	5	--
Tetrabromobiphenyl	Mg/Kg	IEC 62321 series, GC-MS	N.D.	5	--
Pentabromobiphenyl	Mg/Kg	IEC 62321 series, GC-MS	N.D.	5	--
Hexabromobiphenyl	Mg/Kg	IEC 62321 series, GC-MS	N.D.	5	--
Heptabromobiphenyl	Mg/Kg	IEC 62321 series, GC-MS	N.D.	5	--
Octabromobiphenyl	Mg/Kg	IEC 62321 series, GC-MS	N.D.	5	--
Nonabromobiphenyl	Mg/Kg	IEC 62321 series, GC-MS	N.D.	5	--
Decabromobiphenyl	Mg/Kg	IEC 62321 series, GC-MS	N.D.	5	--
<b>Sum Of Pbdes</b>	<b>Mg/Kg</b>	<b>IEC 62321 series, GC-MS</b>	<b>N.D.</b>	<b>--</b>	<b>1000</b>
Monobromodiphenyl Ether	Mg/Kg	IEC 62321 series, GC-MS	N.D.	5	--
Dibromodiphenyl Ether	Mg/Kg	IEC 62321 series, GC-MS	N.D.	5	--
Tribromodiphenyl Ether	Mg/Kg	IEC 62321 series, GC-MS	N.D.	5	--
Tetrabromodiphenyl Ether	Mg/Kg	IEC 62321 series, GC-MS	N.D.	5	--
Pentabromodiphenyl Ether	Mg/Kg	IEC 62321 series, GC-MS	N.D.	5	--
Hexabromodiphenyl Ether	Mg/Kg	IEC 62321 series, GC-MS	N.D.	5	--
Heptabromodiphenyl Ether	Mg/Kg	IEC 62321 series, GC-MS	N.D.	5	--
Octabromodiphenyl Ether	Mg/Kg	IEC 62321 series, GC-MS	N.D.	5	--
Nonabromodiphenyl Ether	Mg/Kg	IEC 62321 series, GC-MS	N.D.	5	--
Decabromodiphenyl Ether	Mg/Kg	IEC 62321 series, GC-MS	N.D.	5	--
<b>Priority view to further restrictions of substances</b>					
Dibutyl Phthalate(DBP)	mg/kg	IEC 62321 series, GC-MS	N.D.	50	1000
Benzylbutyl Phthalate (BBP)	mg/kg	IEC 62321 series, GC-MS	N.D.	50	1000
Di-(2-ethylhexyl) Phthalate(DEHP)	mg/kg	IEC 62321 series, GC-MS	N.D.	50	1000
Diisobutyl Phthalate (DIBP)	mg/kg	IEC 62321 series, GC-MS	N.D.	50	1000



# Test Report

Report No: BTT20220526836RR-1

Date: May. 28, 2022

Page 11 of 43

## Test Result (No.8):

Test Item(S)	Unit	Test Method (Reference)	Result	MDL	Limit
Cadmium(Cd)	Mg/Kg	IEC 62321 series, ICP-OES	N.D.	2	100
Lead(Pb)	Mg/Kg	IEC 62321 series, ICP-OES	N.D.	2	1000
Mercury(Hg)	Mg/Kg	IEC 62321 series, ICP-OES	N.D.	2	1000
Hexavalent Chromium(Crvi)	Mg/Kg	IEC 62321 series, UV-Vis	N.D.	2	1000
<b>Sum Of Pbbs</b>	<b>Mg/Kg</b>	<b>IEC 62321 series, GC-MS</b>	N.D.	--	<b>1000</b>
Monobromobiphenyl	Mg/Kg	IEC 62321 series, GC-MS	N.D.	5	--
Dibromobiphenyl	Mg/Kg	IEC 62321 series, GC-MS	N.D.	5	--
Tribromobiphenyl	Mg/Kg	IEC 62321 series, GC-MS	N.D.	5	--
Tetrabromobiphenyl	Mg/Kg	IEC 62321 series, GC-MS	N.D.	5	--
Pentabromobiphenyl	Mg/Kg	IEC 62321 series, GC-MS	N.D.	5	--
Hexabromobiphenyl	Mg/Kg	IEC 62321 series, GC-MS	N.D.	5	--
Heptabromobiphenyl	Mg/Kg	IEC 62321 series, GC-MS	N.D.	5	--
Octabromobiphenyl	Mg/Kg	IEC 62321 series, GC-MS	N.D.	5	--
Nonabromobiphenyl	Mg/Kg	IEC 62321 series, GC-MS	N.D.	5	--
Decabromobiphenyl	Mg/Kg	IEC 62321 series, GC-MS	N.D.	5	--
<b>Sum Of Pbdes</b>	<b>Mg/Kg</b>	<b>IEC 62321 series, GC-MS</b>	N.D.	--	<b>1000</b>
Monobromodiphenyl Ether	Mg/Kg	IEC 62321 series, GC-MS	N.D.	5	--
Dibromodiphenyl Ether	Mg/Kg	IEC 62321 series, GC-MS	N.D.	5	--
Tribromodiphenyl Ether	Mg/Kg	IEC 62321 series, GC-MS	N.D.	5	--
Tetrabromodiphenyl Ether	Mg/Kg	IEC 62321 series, GC-MS	N.D.	5	--
Pentabromodiphenyl Ether	Mg/Kg	IEC 62321 series, GC-MS	N.D.	5	--
Hexabromodiphenyl Ether	Mg/Kg	IEC 62321 series, GC-MS	N.D.	5	--
Heptabromodiphenyl Ether	Mg/Kg	IEC 62321 series, GC-MS	N.D.	5	--
Octabromodiphenyl Ether	Mg/Kg	IEC 62321 series, GC-MS	N.D.	5	--
Nonabromodiphenyl Ether	Mg/Kg	IEC 62321 series, GC-MS	N.D.	5	--
Decabromodiphenyl Ether	Mg/Kg	IEC 62321 series, GC-MS	N.D.	5	--
<b>Priority view to further restrictions of substances</b>					
Dibutyl Phthalate(DBP)	mg/kg	IEC 62321 series, GC-MS	N.D.	50	1000
Benzylbutyl Phthalate (BBP)	mg/kg	IEC 62321 series, GC-MS	N.D.	50	1000
Di-(2-ethylhexyl) Phthalate(DEHP)	mg/kg	IEC 62321 series, GC-MS	N.D.	50	1000
Diisobutyl Phthalate (DIBP)	mg/kg	IEC 62321 series, GC-MS	N.D.	50	1000



# Test Report

Report No: BTT20220526836RR-1

Date: May. 28, 2022

Page 12 of 43

## Test Result (No.9):

Test Item(S)	Unit	Test Method (Reference)	Result	MDL	Limit
Cadmium(Cd)	Mg/Kg	IEC 62321 series, ICP-OES	N.D.	2	100
Lead(Pb)	Mg/Kg	IEC 62321 series, ICP-OES	N.D.	2	1000
Mercury(Hg)	Mg/Kg	IEC 62321 series, ICP-OES	N.D.	2	1000
Hexavalent Chromium(Crvi)	Mg/Kg	IEC 62321 series, UV-Vis	N.D.	2	1000
<b>Sum Of Pbbs</b>	<b>Mg/Kg</b>	<b>IEC 62321 series, GC-MS</b>	<b>N.D.</b>	<b>--</b>	<b>1000</b>
Monobromobiphenyl	Mg/Kg	IEC 62321 series, GC-MS	N.D.	5	--
Dibromobiphenyl	Mg/Kg	IEC 62321 series, GC-MS	N.D.	5	--
Tribromobiphenyl	Mg/Kg	IEC 62321 series, GC-MS	N.D.	5	--
Tetrabromobiphenyl	Mg/Kg	IEC 62321 series, GC-MS	N.D.	5	--
Pentabromobiphenyl	Mg/Kg	IEC 62321 series, GC-MS	N.D.	5	--
Hexabromobiphenyl	Mg/Kg	IEC 62321 series, GC-MS	N.D.	5	--
Heptabromobiphenyl	Mg/Kg	IEC 62321 series, GC-MS	N.D.	5	--
Octabromobiphenyl	Mg/Kg	IEC 62321 series, GC-MS	N.D.	5	--
Nonabromobiphenyl	Mg/Kg	IEC 62321 series, GC-MS	N.D.	5	--
Decabromobiphenyl	Mg/Kg	IEC 62321 series, GC-MS	N.D.	5	--
<b>Sum Of Pbdes</b>	<b>Mg/Kg</b>	<b>IEC 62321 series, GC-MS</b>	<b>N.D.</b>	<b>--</b>	<b>1000</b>
Monobromodiphenyl Ether	Mg/Kg	IEC 62321 series, GC-MS	N.D.	5	--
Dibromodiphenyl Ether	Mg/Kg	IEC 62321 series, GC-MS	N.D.	5	--
Tribromodiphenyl Ether	Mg/Kg	IEC 62321 series, GC-MS	N.D.	5	--
Tetrabromodiphenyl Ether	Mg/Kg	IEC 62321 series, GC-MS	N.D.	5	--
Pentabromodiphenyl Ether	Mg/Kg	IEC 62321 series, GC-MS	N.D.	5	--
Hexabromodiphenyl Ether	Mg/Kg	IEC 62321 series, GC-MS	N.D.	5	--
Heptabromodiphenyl Ether	Mg/Kg	IEC 62321 series, GC-MS	N.D.	5	--
Octabromodiphenyl Ether	Mg/Kg	IEC 62321 series, GC-MS	N.D.	5	--
Nonabromodiphenyl Ether	Mg/Kg	IEC 62321 series, GC-MS	N.D.	5	--
Decabromodiphenyl Ether	Mg/Kg	IEC 62321 series, GC-MS	N.D.	5	--
<b>Priority view to further restrictions of substances</b>					
Dibutyl Phthalate(DBP)	mg/kg	IEC 62321 series, GC-MS	N.D.	50	1000
Benzylbutyl Phthalate (BBP)	mg/kg	IEC 62321 series, GC-MS	N.D.	50	1000
Di-(2-ethylhexyl) Phthalate(DEHP)	mg/kg	IEC 62321 series, GC-MS	N.D.	50	1000
Diisobutyl Phthalate (DIBP)	mg/kg	IEC 62321 series, GC-MS	N.D.	50	1000



# Test Report

Report No: BTT20220526836RR-1

Date: May. 28, 2022

Page 13 of 43

## Test Result (No.10):

Test Item(S)	Unit	Test Method (Reference)	Result	MDL	Limit
Cadmium(Cd)	Mg/Kg	IEC 62321 series, ICP-OES	N.D.	2	100
Lead(Pb)	Mg/Kg	IEC 62321 series, ICP-OES	N.D.	2	1000
Mercury(Hg)	Mg/Kg	IEC 62321 series, ICP-OES	N.D.	2	1000
Hexavalent Chromium(Crvi)	Mg/Kg	IEC 62321 series, UV-Vis	N.D.	2	1000
<b>Sum Of Pbbs</b>	<b>Mg/Kg</b>	<b>IEC 62321 series, GC-MS</b>	<b>N.D.</b>	<b>--</b>	<b>1000</b>
Monobromobiphenyl	Mg/Kg	IEC 62321 series, GC-MS	N.D.	5	--
Dibromobiphenyl	Mg/Kg	IEC 62321 series, GC-MS	N.D.	5	--
Tribromobiphenyl	Mg/Kg	IEC 62321 series, GC-MS	N.D.	5	--
Tetrabromobiphenyl	Mg/Kg	IEC 62321 series, GC-MS	N.D.	5	--
Pentabromobiphenyl	Mg/Kg	IEC 62321 series, GC-MS	N.D.	5	--
Hexabromobiphenyl	Mg/Kg	IEC 62321 series, GC-MS	N.D.	5	--
Heptabromobiphenyl	Mg/Kg	IEC 62321 series, GC-MS	N.D.	5	--
Octabromobiphenyl	Mg/Kg	IEC 62321 series, GC-MS	N.D.	5	--
Nonabromobiphenyl	Mg/Kg	IEC 62321 series, GC-MS	N.D.	5	--
Decabromobiphenyl	Mg/Kg	IEC 62321 series, GC-MS	N.D.	5	--
<b>Sum Of Pbdes</b>	<b>Mg/Kg</b>	<b>IEC 62321 series, GC-MS</b>	<b>N.D.</b>	<b>--</b>	<b>1000</b>
Monobromodiphenyl Ether	Mg/Kg	IEC 62321 series, GC-MS	N.D.	5	--
Dibromodiphenyl Ether	Mg/Kg	IEC 62321 series, GC-MS	N.D.	5	--
Tribromodiphenyl Ether	Mg/Kg	IEC 62321 series, GC-MS	N.D.	5	--
Tetrabromodiphenyl Ether	Mg/Kg	IEC 62321 series, GC-MS	N.D.	5	--
Pentabromodiphenyl Ether	Mg/Kg	IEC 62321 series, GC-MS	N.D.	5	--
Hexabromodiphenyl Ether	Mg/Kg	IEC 62321 series, GC-MS	N.D.	5	--
Heptabromodiphenyl Ether	Mg/Kg	IEC 62321 series, GC-MS	N.D.	5	--
Octabromodiphenyl Ether	Mg/Kg	IEC 62321 series, GC-MS	N.D.	5	--
Nonabromodiphenyl Ether	Mg/Kg	IEC 62321 series, GC-MS	N.D.	5	--
Decabromodiphenyl Ether	Mg/Kg	IEC 62321 series, GC-MS	N.D.	5	--
<b>Priority view to further restrictions of substances</b>					
Dibutyl Phthalate(DBP)	mg/kg	IEC 62321 series, GC-MS	N.D.	50	1000
Benzylbutyl Phthalate (BBP)	mg/kg	IEC 62321 series, GC-MS	N.D.	50	1000
Di-(2-ethylhexyl) Phthalate(DEHP)	mg/kg	IEC 62321 series, GC-MS	N.D.	50	1000
Diisobutyl Phthalate (DIBP)	mg/kg	IEC 62321 series, GC-MS	N.D.	50	1000





# Test Report

Report No: BTT20220526836RR-1

Date: May. 28, 2022

Page 14 of 43

## Test Result (No.11):

Test Item(S)	Unit	Test Method (Reference)	Result	MDL	Limit
Cadmium(Cd)	Mg/Kg	IEC 62321 series, ICP-OES	N.D.	2	100
Lead(Pb)	Mg/Kg	IEC 62321 series, ICP-OES	N.D.	2	1000
Mercury(Hg)	Mg/Kg	IEC 62321 series, ICP-OES	N.D.	2	1000
Hexavalent Chromium(Crvi)	Mg/Kg	IEC 62321 series, UV-Vis	N.D.	2	1000
<b>Sum Of Pbbs</b>	<b>Mg/Kg</b>	<b>IEC 62321 series, GC-MS</b>	<b>N.D.</b>	<b>--</b>	<b>1000</b>
Monobromobiphenyl	Mg/Kg	IEC 62321 series, GC-MS	N.D.	5	--
Dibromobiphenyl	Mg/Kg	IEC 62321 series, GC-MS	N.D.	5	--
Tribromobiphenyl	Mg/Kg	IEC 62321 series, GC-MS	N.D.	5	--
Tetrabromobiphenyl	Mg/Kg	IEC 62321 series, GC-MS	N.D.	5	--
Pentabromobiphenyl	Mg/Kg	IEC 62321 series, GC-MS	N.D.	5	--
Hexabromobiphenyl	Mg/Kg	IEC 62321 series, GC-MS	N.D.	5	--
Heptabromobiphenyl	Mg/Kg	IEC 62321 series, GC-MS	N.D.	5	--
Octabromobiphenyl	Mg/Kg	IEC 62321 series, GC-MS	N.D.	5	--
Nonabromobiphenyl	Mg/Kg	IEC 62321 series, GC-MS	N.D.	5	--
Decabromobiphenyl	Mg/Kg	IEC 62321 series, GC-MS	N.D.	5	--
<b>Sum Of Pbdes</b>	<b>Mg/Kg</b>	<b>IEC 62321 series, GC-MS</b>	<b>N.D.</b>	<b>--</b>	<b>1000</b>
Monobromodiphenyl Ether	Mg/Kg	IEC 62321 series, GC-MS	N.D.	5	--
Dibromodiphenyl Ether	Mg/Kg	IEC 62321 series, GC-MS	N.D.	5	--
Tribromodiphenyl Ether	Mg/Kg	IEC 62321 series, GC-MS	N.D.	5	--
Tetrabromodiphenyl Ether	Mg/Kg	IEC 62321 series, GC-MS	N.D.	5	--
Pentabromodiphenyl Ether	Mg/Kg	IEC 62321 series, GC-MS	N.D.	5	--
Hexabromodiphenyl Ether	Mg/Kg	IEC 62321 series, GC-MS	N.D.	5	--
Heptabromodiphenyl Ether	Mg/Kg	IEC 62321 series, GC-MS	N.D.	5	--
Octabromodiphenyl Ether	Mg/Kg	IEC 62321 series, GC-MS	N.D.	5	--
Nonabromodiphenyl Ether	Mg/Kg	IEC 62321 series, GC-MS	N.D.	5	--
Decabromodiphenyl Ether	Mg/Kg	IEC 62321 series, GC-MS	N.D.	5	--
<b>Priority view to further restrictions of substances</b>					
Dibutyl Phthalate(DBP)	mg/kg	IEC 62321 series, GC-MS	N.D.	50	1000
Benzylbutyl Phthalate (BBP)	mg/kg	IEC 62321 series, GC-MS	N.D.	50	1000
Di-(2-ethylhexyl) Phthalate(DEHP)	mg/kg	IEC 62321 series, GC-MS	N.D.	50	1000
Diisobutyl Phthalate (DIBP)	mg/kg	IEC 62321 series, GC-MS	N.D.	50	1000





# Test Report

Report No: BTT20220526836RR-1

Date: May. 28, 2022

Page 15 of 43

## Test Result (No.12):

Test Item(S)	Unit	Test Method (Reference)	Result	MDL	Limit
Cadmium(Cd)	Mg/Kg	IEC 62321 series, ICP-OES	N.D.	2	100
Lead(Pb)	Mg/Kg	IEC 62321 series, ICP-OES	N.D.	2	1000
Mercury(Hg)	Mg/Kg	IEC 62321 series, ICP-OES	N.D.	2	1000
Hexavalent Chromium(Crvi)	Mg/Kg	IEC 62321 series, UV-Vis	N.D.	2	1000
<b>Sum Of Pbbs</b>	<b>Mg/Kg</b>	<b>IEC 62321 series, GC-MS</b>	<b>N.D.</b>	<b>--</b>	<b>1000</b>
Monobromobiphenyl	Mg/Kg	IEC 62321 series, GC-MS	N.D.	5	--
Dibromobiphenyl	Mg/Kg	IEC 62321 series, GC-MS	N.D.	5	--
Tribromobiphenyl	Mg/Kg	IEC 62321 series, GC-MS	N.D.	5	--
Tetrabromobiphenyl	Mg/Kg	IEC 62321 series, GC-MS	N.D.	5	--
Pentabromobiphenyl	Mg/Kg	IEC 62321 series, GC-MS	N.D.	5	--
Hexabromobiphenyl	Mg/Kg	IEC 62321 series, GC-MS	N.D.	5	--
Heptabromobiphenyl	Mg/Kg	IEC 62321 series, GC-MS	N.D.	5	--
Octabromobiphenyl	Mg/Kg	IEC 62321 series, GC-MS	N.D.	5	--
Nonabromobiphenyl	Mg/Kg	IEC 62321 series, GC-MS	N.D.	5	--
Decabromobiphenyl	Mg/Kg	IEC 62321 series, GC-MS	N.D.	5	--
<b>Sum Of Pbdes</b>	<b>Mg/Kg</b>	<b>IEC 62321 series, GC-MS</b>	<b>N.D.</b>	<b>--</b>	<b>1000</b>
Monobromodiphenyl Ether	Mg/Kg	IEC 62321 series, GC-MS	N.D.	5	--
Dibromodiphenyl Ether	Mg/Kg	IEC 62321 series, GC-MS	N.D.	5	--
Tribromodiphenyl Ether	Mg/Kg	IEC 62321 series, GC-MS	N.D.	5	--
Tetrabromodiphenyl Ether	Mg/Kg	IEC 62321 series, GC-MS	N.D.	5	--
Pentabromodiphenyl Ether	Mg/Kg	IEC 62321 series, GC-MS	N.D.	5	--
Hexabromodiphenyl Ether	Mg/Kg	IEC 62321 series, GC-MS	N.D.	5	--
Heptabromodiphenyl Ether	Mg/Kg	IEC 62321 series, GC-MS	N.D.	5	--
Octabromodiphenyl Ether	Mg/Kg	IEC 62321 series, GC-MS	N.D.	5	--
Nonabromodiphenyl Ether	Mg/Kg	IEC 62321 series, GC-MS	N.D.	5	--
Decabromodiphenyl Ether	Mg/Kg	IEC 62321 series, GC-MS	N.D.	5	--
<b>Priority view to further restrictions of substances</b>					
Dibutyl Phthalate(DBP)	mg/kg	IEC 62321 series, GC-MS	N.D.	50	1000
Benzylbutyl Phthalate (BBP)	mg/kg	IEC 62321 series, GC-MS	N.D.	50	1000
Di-(2-ethylhexyl) Phthalate(DEHP)	mg/kg	IEC 62321 series, GC-MS	N.D.	50	1000
Diisobutyl Phthalate (DIBP)	mg/kg	IEC 62321 series, GC-MS	N.D.	50	1000



# Test Report

Report No: BTT20220526836RR-1

Date: May. 28, 2022

Page 16 of 43

## Test Result (No.13):

Test Item(S)	Unit	Test Method (Reference)	Result	MDL	Limit
Cadmium(Cd)	Mg/Kg	IEC 62321 series, ICP-OES	N.D.	2	100
Lead(Pb)	Mg/Kg	IEC 62321 series, ICP-OES	N.D.	2	1000
Mercury(Hg)	Mg/Kg	IEC 62321 series, ICP-OES	N.D.	2	1000
Hexavalent Chromium(Crvi)	Mg/Kg	IEC 62321 series, UV-Vis	N.D.	2	1000
<b>Sum Of Pbbs</b>	<b>Mg/Kg</b>	<b>IEC 62321 series, GC-MS</b>	<b>N.D.</b>	<b>--</b>	<b>1000</b>
Monobromobiphenyl	Mg/Kg	IEC 62321 series, GC-MS	N.D.	5	--
Dibromobiphenyl	Mg/Kg	IEC 62321 series, GC-MS	N.D.	5	--
Tribromobiphenyl	Mg/Kg	IEC 62321 series, GC-MS	N.D.	5	--
Tetrabromobiphenyl	Mg/Kg	IEC 62321 series, GC-MS	N.D.	5	--
Pentabromobiphenyl	Mg/Kg	IEC 62321 series, GC-MS	N.D.	5	--
Hexabromobiphenyl	Mg/Kg	IEC 62321 series, GC-MS	N.D.	5	--
Heptabromobiphenyl	Mg/Kg	IEC 62321 series, GC-MS	N.D.	5	--
Octabromobiphenyl	Mg/Kg	IEC 62321 series, GC-MS	N.D.	5	--
Nonabromobiphenyl	Mg/Kg	IEC 62321 series, GC-MS	N.D.	5	--
Decabromobiphenyl	Mg/Kg	IEC 62321 series, GC-MS	N.D.	5	--
<b>Sum Of Pbdes</b>	<b>Mg/Kg</b>	<b>IEC 62321 series, GC-MS</b>	<b>N.D.</b>	<b>--</b>	<b>1000</b>
Monobromodiphenyl Ether	Mg/Kg	IEC 62321 series, GC-MS	N.D.	5	--
Dibromodiphenyl Ether	Mg/Kg	IEC 62321 series, GC-MS	N.D.	5	--
Tribromodiphenyl Ether	Mg/Kg	IEC 62321 series, GC-MS	N.D.	5	--
Tetrabromodiphenyl Ether	Mg/Kg	IEC 62321 series, GC-MS	N.D.	5	--
Pentabromodiphenyl Ether	Mg/Kg	IEC 62321 series, GC-MS	N.D.	5	--
Hexabromodiphenyl Ether	Mg/Kg	IEC 62321 series, GC-MS	N.D.	5	--
Heptabromodiphenyl Ether	Mg/Kg	IEC 62321 series, GC-MS	N.D.	5	--
Octabromodiphenyl Ether	Mg/Kg	IEC 62321 series, GC-MS	N.D.	5	--
Nonabromodiphenyl Ether	Mg/Kg	IEC 62321 series, GC-MS	N.D.	5	--
Decabromodiphenyl Ether	Mg/Kg	IEC 62321 series, GC-MS	N.D.	5	--
<b>Priority view to further restrictions of substances</b>					
Dibutyl Phthalate(DBP)	mg/kg	IEC 62321 series, GC-MS	N.D.	50	1000
Benzylbutyl Phthalate (BBP)	mg/kg	IEC 62321 series, GC-MS	N.D.	50	1000
Di-(2-ethylhexyl) Phthalate(DEHP)	mg/kg	IEC 62321 series, GC-MS	N.D.	50	1000
Diisobutyl Phthalate (DIBP)	mg/kg	IEC 62321 series, GC-MS	N.D.	50	1000



# Test Report

Report No: BTT20220526836RR-1

Date: May. 28, 2022

Page 17 of 43

## Test Result (No.14):

Test Item(S)	Unit	Test Method (Reference)	Result	MDL	Limit
Cadmium(Cd)	Mg/Kg	IEC 62321 series, ICP-OES	N.D.	2	100
Lead(Pb)	Mg/Kg	IEC 62321 series, ICP-OES	N.D.	2	1000
Mercury(Hg)	Mg/Kg	IEC 62321 series, ICP-OES	N.D.	2	1000
Hexavalent Chromium(Crvi)	Mg/Kg	IEC 62321 series, UV-Vis	N.D.	2	1000
<b>Sum Of Pbbs</b>	<b>Mg/Kg</b>	<b>IEC 62321 series, GC-MS</b>	<b>N.D.</b>	<b>--</b>	<b>1000</b>
Monobromobiphenyl	Mg/Kg	IEC 62321 series, GC-MS	N.D.	5	--
Dibromobiphenyl	Mg/Kg	IEC 62321 series, GC-MS	N.D.	5	--
Tribromobiphenyl	Mg/Kg	IEC 62321 series, GC-MS	N.D.	5	--
Tetrabromobiphenyl	Mg/Kg	IEC 62321 series, GC-MS	N.D.	5	--
Pentabromobiphenyl	Mg/Kg	IEC 62321 series, GC-MS	N.D.	5	--
Hexabromobiphenyl	Mg/Kg	IEC 62321 series, GC-MS	N.D.	5	--
Heptabromobiphenyl	Mg/Kg	IEC 62321 series, GC-MS	N.D.	5	--
Octabromobiphenyl	Mg/Kg	IEC 62321 series, GC-MS	N.D.	5	--
Nonabromobiphenyl	Mg/Kg	IEC 62321 series, GC-MS	N.D.	5	--
Decabromobiphenyl	Mg/Kg	IEC 62321 series, GC-MS	N.D.	5	--
<b>Sum Of Pbdes</b>	<b>Mg/Kg</b>	<b>IEC 62321 series, GC-MS</b>	<b>N.D.</b>	<b>--</b>	<b>1000</b>
Monobromodiphenyl Ether	Mg/Kg	IEC 62321 series, GC-MS	N.D.	5	--
Dibromodiphenyl Ether	Mg/Kg	IEC 62321 series, GC-MS	N.D.	5	--
Tribromodiphenyl Ether	Mg/Kg	IEC 62321 series, GC-MS	N.D.	5	--
Tetrabromodiphenyl Ether	Mg/Kg	IEC 62321 series, GC-MS	N.D.	5	--
Pentabromodiphenyl Ether	Mg/Kg	IEC 62321 series, GC-MS	N.D.	5	--
Hexabromodiphenyl Ether	Mg/Kg	IEC 62321 series, GC-MS	N.D.	5	--
Heptabromodiphenyl Ether	Mg/Kg	IEC 62321 series, GC-MS	N.D.	5	--
Octabromodiphenyl Ether	Mg/Kg	IEC 62321 series, GC-MS	N.D.	5	--
Nonabromodiphenyl Ether	Mg/Kg	IEC 62321 series, GC-MS	N.D.	5	--
Decabromodiphenyl Ether	Mg/Kg	IEC 62321 series, GC-MS	N.D.	5	--
<b>Priority view to further restrictions of substances</b>					
Dibutyl Phthalate(DBP)	mg/kg	IEC 62321 series, GC-MS	N.D.	50	1000
Benzylbutyl Phthalate (BBP)	mg/kg	IEC 62321 series, GC-MS	N.D.	50	1000
Di-(2-ethylhexyl) Phthalate(DEHP)	mg/kg	IEC 62321 series, GC-MS	N.D.	50	1000
Diisobutyl Phthalate (DIBP)	mg/kg	IEC 62321 series, GC-MS	N.D.	50	1000



# Test Report

Report No: BTT20220526836RR-1

Date: May. 28, 2022

Page 18 of 43

## Test Result (No.15):

Test Item(S)	Unit	Test Method (Reference)	Result	MDL	Limit
Cadmium(Cd)	Mg/Kg	IEC 62321 series, ICP-OES	N.D.	2	100
Lead(Pb)	Mg/Kg	IEC 62321 series, ICP-OES	N.D.	2	1000
Mercury(Hg)	Mg/Kg	IEC 62321 series, ICP-OES	N.D.	2	1000
Hexavalent Chromium(Crvi)	Mg/Kg	IEC 62321 series, UV-Vis	N.D.	2	1000
<b>Sum Of Pbbs</b>	<b>Mg/Kg</b>	<b>IEC 62321 series, GC-MS</b>	<b>N.D.</b>	<b>--</b>	<b>1000</b>
Monobromobiphenyl	Mg/Kg	IEC 62321 series, GC-MS	N.D.	5	--
Dibromobiphenyl	Mg/Kg	IEC 62321 series, GC-MS	N.D.	5	--
Tribromobiphenyl	Mg/Kg	IEC 62321 series, GC-MS	N.D.	5	--
Tetrabromobiphenyl	Mg/Kg	IEC 62321 series, GC-MS	N.D.	5	--
Pentabromobiphenyl	Mg/Kg	IEC 62321 series, GC-MS	N.D.	5	--
Hexabromobiphenyl	Mg/Kg	IEC 62321 series, GC-MS	N.D.	5	--
Heptabromobiphenyl	Mg/Kg	IEC 62321 series, GC-MS	N.D.	5	--
Octabromobiphenyl	Mg/Kg	IEC 62321 series, GC-MS	N.D.	5	--
Nonabromobiphenyl	Mg/Kg	IEC 62321 series, GC-MS	N.D.	5	--
Decabromobiphenyl	Mg/Kg	IEC 62321 series, GC-MS	N.D.	5	--
<b>Sum Of Pbdes</b>	<b>Mg/Kg</b>	<b>IEC 62321 series, GC-MS</b>	<b>N.D.</b>	<b>--</b>	<b>1000</b>
Monobromodiphenyl Ether	Mg/Kg	IEC 62321 series, GC-MS	N.D.	5	--
Dibromodiphenyl Ether	Mg/Kg	IEC 62321 series, GC-MS	N.D.	5	--
Tribromodiphenyl Ether	Mg/Kg	IEC 62321 series, GC-MS	N.D.	5	--
Tetrabromodiphenyl Ether	Mg/Kg	IEC 62321 series, GC-MS	N.D.	5	--
Pentabromodiphenyl Ether	Mg/Kg	IEC 62321 series, GC-MS	N.D.	5	--
Hexabromodiphenyl Ether	Mg/Kg	IEC 62321 series, GC-MS	N.D.	5	--
Heptabromodiphenyl Ether	Mg/Kg	IEC 62321 series, GC-MS	N.D.	5	--
Octabromodiphenyl Ether	Mg/Kg	IEC 62321 series, GC-MS	N.D.	5	--
Nonabromodiphenyl Ether	Mg/Kg	IEC 62321 series, GC-MS	N.D.	5	--
Decabromodiphenyl Ether	Mg/Kg	IEC 62321 series, GC-MS	N.D.	5	--
<b>Priority view to further restrictions of substances</b>					
Dibutyl Phthalate(DBP)	mg/kg	IEC 62321 series, GC-MS	N.D.	50	1000
Benzylbutyl Phthalate (BBP)	mg/kg	IEC 62321 series, GC-MS	N.D.	50	1000
Di-(2-ethylhexyl) Phthalate(DEHP)	mg/kg	IEC 62321 series, GC-MS	N.D.	50	1000
Diisobutyl Phthalate (DIBP)	mg/kg	IEC 62321 series, GC-MS	N.D.	50	1000



# Test Report

Report No: BTT20220526836RR-1

Date: May. 28, 2022

Page 19 of 43

## Test Result (No.16):

Test Item(S)	Unit	Test Method (Reference)	Result	MDL	Limit
Cadmium(Cd)	Mg/Kg	IEC 62321 series, ICP-OES	N.D.	2	100
Lead(Pb)	Mg/Kg	IEC 62321 series, ICP-OES	N.D.	2	1000
Mercury(Hg)	Mg/Kg	IEC 62321 series, ICP-OES	N.D.	2	1000
Hexavalent Chromium(Crvi)	Mg/Kg	IEC 62321 series, UV-Vis	N.D.	2	1000
<b>Sum Of Pbbs</b>	<b>Mg/Kg</b>	<b>IEC 62321 series, GC-MS</b>	<b>N.D.</b>	<b>--</b>	<b>1000</b>
Monobromobiphenyl	Mg/Kg	IEC 62321 series, GC-MS	N.D.	5	--
Dibromobiphenyl	Mg/Kg	IEC 62321 series, GC-MS	N.D.	5	--
Tribromobiphenyl	Mg/Kg	IEC 62321 series, GC-MS	N.D.	5	--
Tetrabromobiphenyl	Mg/Kg	IEC 62321 series, GC-MS	N.D.	5	--
Pentabromobiphenyl	Mg/Kg	IEC 62321 series, GC-MS	N.D.	5	--
Hexabromobiphenyl	Mg/Kg	IEC 62321 series, GC-MS	N.D.	5	--
Heptabromobiphenyl	Mg/Kg	IEC 62321 series, GC-MS	N.D.	5	--
Octabromobiphenyl	Mg/Kg	IEC 62321 series, GC-MS	N.D.	5	--
Nonabromobiphenyl	Mg/Kg	IEC 62321 series, GC-MS	N.D.	5	--
Decabromobiphenyl	Mg/Kg	IEC 62321 series, GC-MS	N.D.	5	--
<b>Sum Of Pbdes</b>	<b>Mg/Kg</b>	<b>IEC 62321 series, GC-MS</b>	<b>N.D.</b>	<b>--</b>	<b>1000</b>
Monobromodiphenyl Ether	Mg/Kg	IEC 62321 series, GC-MS	N.D.	5	--
Dibromodiphenyl Ether	Mg/Kg	IEC 62321 series, GC-MS	N.D.	5	--
Tribromodiphenyl Ether	Mg/Kg	IEC 62321 series, GC-MS	N.D.	5	--
Tetrabromodiphenyl Ether	Mg/Kg	IEC 62321 series, GC-MS	N.D.	5	--
Pentabromodiphenyl Ether	Mg/Kg	IEC 62321 series, GC-MS	N.D.	5	--
Hexabromodiphenyl Ether	Mg/Kg	IEC 62321 series, GC-MS	N.D.	5	--
Heptabromodiphenyl Ether	Mg/Kg	IEC 62321 series, GC-MS	N.D.	5	--
Octabromodiphenyl Ether	Mg/Kg	IEC 62321 series, GC-MS	N.D.	5	--
Nonabromodiphenyl Ether	Mg/Kg	IEC 62321 series, GC-MS	N.D.	5	--
Decabromodiphenyl Ether	Mg/Kg	IEC 62321 series, GC-MS	N.D.	5	--
<b>Priority view to further restrictions of substances</b>					
Dibutyl Phthalate(DBP)	mg/kg	IEC 62321 series, GC-MS	N.D.	50	1000
Benzylbutyl Phthalate (BBP)	mg/kg	IEC 62321 series, GC-MS	N.D.	50	1000
Di-(2-ethylhexyl) Phthalate(DEHP)	mg/kg	IEC 62321 series, GC-MS	N.D.	50	1000
Diisobutyl Phthalate (DIBP)	mg/kg	IEC 62321 series, GC-MS	N.D.	50	1000





# Test Report

Report No: BTT20220526836RR-1

Date: May. 28, 2022

Page 20 of 43

## Test Result (No.17):

Test Item(S)	Unit	Test Method (Reference)	Result	MDL	Limit
Cadmium(Cd)	Mg/Kg	IEC 62321 series, ICP-OES	N.D.	2	100
Lead(Pb)	Mg/Kg	IEC 62321 series, ICP-OES	N.D.	2	1000
Mercury(Hg)	Mg/Kg	IEC 62321 series, ICP-OES	N.D.	2	1000
Hexavalent Chromium(Crvi)	Mg/Kg	IEC 62321 series, UV-Vis	N.D.	2	1000
<b>Sum Of Pbbs</b>	<b>Mg/Kg</b>	<b>IEC 62321 series, GC-MS</b>	<b>N.D.</b>	<b>--</b>	<b>1000</b>
Monobromobiphenyl	Mg/Kg	IEC 62321 series, GC-MS	N.D.	5	--
Dibromobiphenyl	Mg/Kg	IEC 62321 series, GC-MS	N.D.	5	--
Tribromobiphenyl	Mg/Kg	IEC 62321 series, GC-MS	N.D.	5	--
Tetrabromobiphenyl	Mg/Kg	IEC 62321 series, GC-MS	N.D.	5	--
Pentabromobiphenyl	Mg/Kg	IEC 62321 series, GC-MS	N.D.	5	--
Hexabromobiphenyl	Mg/Kg	IEC 62321 series, GC-MS	N.D.	5	--
Heptabromobiphenyl	Mg/Kg	IEC 62321 series, GC-MS	N.D.	5	--
Octabromobiphenyl	Mg/Kg	IEC 62321 series, GC-MS	N.D.	5	--
Nonabromobiphenyl	Mg/Kg	IEC 62321 series, GC-MS	N.D.	5	--
Decabromobiphenyl	Mg/Kg	IEC 62321 series, GC-MS	N.D.	5	--
<b>Sum Of Pbdes</b>	<b>Mg/Kg</b>	<b>IEC 62321 series, GC-MS</b>	<b>N.D.</b>	<b>--</b>	<b>1000</b>
Monobromodiphenyl Ether	Mg/Kg	IEC 62321 series, GC-MS	N.D.	5	--
Dibromodiphenyl Ether	Mg/Kg	IEC 62321 series, GC-MS	N.D.	5	--
Tribromodiphenyl Ether	Mg/Kg	IEC 62321 series, GC-MS	N.D.	5	--
Tetrabromodiphenyl Ether	Mg/Kg	IEC 62321 series, GC-MS	N.D.	5	--
Pentabromodiphenyl Ether	Mg/Kg	IEC 62321 series, GC-MS	N.D.	5	--
Hexabromodiphenyl Ether	Mg/Kg	IEC 62321 series, GC-MS	N.D.	5	--
Heptabromodiphenyl Ether	Mg/Kg	IEC 62321 series, GC-MS	N.D.	5	--
Octabromodiphenyl Ether	Mg/Kg	IEC 62321 series, GC-MS	N.D.	5	--
Nonabromodiphenyl Ether	Mg/Kg	IEC 62321 series, GC-MS	N.D.	5	--
Decabromodiphenyl Ether	Mg/Kg	IEC 62321 series, GC-MS	N.D.	5	--
<b>Priority view to further restrictions of substances</b>					
Dibutyl Phthalate(DBP)	mg/kg	IEC 62321 series, GC-MS	N.D.	50	1000
Benzylbutyl Phthalate (BBP)	mg/kg	IEC 62321 series, GC-MS	N.D.	50	1000
Di-(2-ethylhexyl) Phthalate(DEHP)	mg/kg	IEC 62321 series, GC-MS	N.D.	50	1000
Diisobutyl Phthalate (DIBP)	mg/kg	IEC 62321 series, GC-MS	N.D.	50	1000





# Test Report

Report No: BTT20220526836RR-1

Date: May. 28, 2022

Page 21 of 43

## Test Result (No.18):

Test Item(S)	Unit	Test Method (Reference)	Result	MDL	Limit
Cadmium(Cd)	Mg/Kg	IEC 62321 series, ICP-OES	N.D.	2	100
Lead(Pb)	Mg/Kg	IEC 62321 series, ICP-OES	N.D.	2	1000
Mercury(Hg)	Mg/Kg	IEC 62321 series, ICP-OES	N.D.	2	1000
Hexavalent Chromium(Crvi)	Mg/Kg	IEC 62321 series, UV-Vis	N.D.	2	1000
<b>Sum Of Pbbs</b>	<b>Mg/Kg</b>	<b>IEC 62321 series, GC-MS</b>	<b>N.D.</b>	<b>--</b>	<b>1000</b>
Monobromobiphenyl	Mg/Kg	IEC 62321 series, GC-MS	N.D.	5	--
Dibromobiphenyl	Mg/Kg	IEC 62321 series, GC-MS	N.D.	5	--
Tribromobiphenyl	Mg/Kg	IEC 62321 series, GC-MS	N.D.	5	--
Tetrabromobiphenyl	Mg/Kg	IEC 62321 series, GC-MS	N.D.	5	--
Pentabromobiphenyl	Mg/Kg	IEC 62321 series, GC-MS	N.D.	5	--
Hexabromobiphenyl	Mg/Kg	IEC 62321 series, GC-MS	N.D.	5	--
Heptabromobiphenyl	Mg/Kg	IEC 62321 series, GC-MS	N.D.	5	--
Octabromobiphenyl	Mg/Kg	IEC 62321 series, GC-MS	N.D.	5	--
Nonabromobiphenyl	Mg/Kg	IEC 62321 series, GC-MS	N.D.	5	--
Decabromobiphenyl	Mg/Kg	IEC 62321 series, GC-MS	N.D.	5	--
<b>Sum Of Pbdes</b>	<b>Mg/Kg</b>	<b>IEC 62321 series, GC-MS</b>	<b>N.D.</b>	<b>--</b>	<b>1000</b>
Monobromodiphenyl Ether	Mg/Kg	IEC 62321 series, GC-MS	N.D.	5	--
Dibromodiphenyl Ether	Mg/Kg	IEC 62321 series, GC-MS	N.D.	5	--
Tribromodiphenyl Ether	Mg/Kg	IEC 62321 series, GC-MS	N.D.	5	--
Tetrabromodiphenyl Ether	Mg/Kg	IEC 62321 series, GC-MS	N.D.	5	--
Pentabromodiphenyl Ether	Mg/Kg	IEC 62321 series, GC-MS	N.D.	5	--
Hexabromodiphenyl Ether	Mg/Kg	IEC 62321 series, GC-MS	N.D.	5	--
Heptabromodiphenyl Ether	Mg/Kg	IEC 62321 series, GC-MS	N.D.	5	--
Octabromodiphenyl Ether	Mg/Kg	IEC 62321 series, GC-MS	N.D.	5	--
Nonabromodiphenyl Ether	Mg/Kg	IEC 62321 series, GC-MS	N.D.	5	--
Decabromodiphenyl Ether	Mg/Kg	IEC 62321 series, GC-MS	N.D.	5	--
<b>Priority view to further restrictions of substances</b>					
Dibutyl Phthalate(DBP)	mg/kg	IEC 62321 series, GC-MS	N.D.	50	1000
Benzylbutyl Phthalate (BBP)	mg/kg	IEC 62321 series, GC-MS	N.D.	50	1000
Di-(2-ethylhexyl) Phthalate(DEHP)	mg/kg	IEC 62321 series, GC-MS	N.D.	50	1000
Diisobutyl Phthalate (DIBP)	mg/kg	IEC 62321 series, GC-MS	N.D.	50	1000



# Test Report

Report No: BTT20220526836RR-1

Date: May. 28, 2022

Page 22 of 43

## Test Result (No.19):

Test Item(S)	Unit	Test Method (Reference)	Result	MDL	Limit
Cadmium(Cd)	Mg/Kg	IEC 62321 series, ICP-OES	N.D.	2	100
Lead(Pb)	Mg/Kg	IEC 62321 series, ICP-OES	N.D.	2	1000
Mercury(Hg)	Mg/Kg	IEC 62321 series, ICP-OES	N.D.	2	1000
Hexavalent Chromium(Crvi)	Mg/Kg	IEC 62321 series, UV-Vis	N.D.	2	1000
<b>Sum Of Pbbs</b>	<b>Mg/Kg</b>	<b>IEC 62321 series, GC-MS</b>	N.D.	--	<b>1000</b>
Monobromobiphenyl	Mg/Kg	IEC 62321 series, GC-MS	N.D.	5	--
Dibromobiphenyl	Mg/Kg	IEC 62321 series, GC-MS	N.D.	5	--
Tribromobiphenyl	Mg/Kg	IEC 62321 series, GC-MS	N.D.	5	--
Tetrabromobiphenyl	Mg/Kg	IEC 62321 series, GC-MS	N.D.	5	--
Pentabromobiphenyl	Mg/Kg	IEC 62321 series, GC-MS	N.D.	5	--
Hexabromobiphenyl	Mg/Kg	IEC 62321 series, GC-MS	N.D.	5	--
Heptabromobiphenyl	Mg/Kg	IEC 62321 series, GC-MS	N.D.	5	--
Octabromobiphenyl	Mg/Kg	IEC 62321 series, GC-MS	N.D.	5	--
Nonabromobiphenyl	Mg/Kg	IEC 62321 series, GC-MS	N.D.	5	--
Decabromobiphenyl	Mg/Kg	IEC 62321 series, GC-MS	N.D.	5	--
<b>Sum Of Pbdes</b>	<b>Mg/Kg</b>	<b>IEC 62321 series, GC-MS</b>	N.D.	--	<b>1000</b>
Monobromodiphenyl Ether	Mg/Kg	IEC 62321 series, GC-MS	N.D.	5	--
Dibromodiphenyl Ether	Mg/Kg	IEC 62321 series, GC-MS	N.D.	5	--
Tribromodiphenyl Ether	Mg/Kg	IEC 62321 series, GC-MS	N.D.	5	--
Tetrabromodiphenyl Ether	Mg/Kg	IEC 62321 series, GC-MS	N.D.	5	--
Pentabromodiphenyl Ether	Mg/Kg	IEC 62321 series, GC-MS	N.D.	5	--
Hexabromodiphenyl Ether	Mg/Kg	IEC 62321 series, GC-MS	N.D.	5	--
Heptabromodiphenyl Ether	Mg/Kg	IEC 62321 series, GC-MS	N.D.	5	--
Octabromodiphenyl Ether	Mg/Kg	IEC 62321 series, GC-MS	N.D.	5	--
Nonabromodiphenyl Ether	Mg/Kg	IEC 62321 series, GC-MS	N.D.	5	--
Decabromodiphenyl Ether	Mg/Kg	IEC 62321 series, GC-MS	N.D.	5	--
<b>Priority view to further restrictions of substances</b>					
Dibutyl Phthalate(DBP)	mg/kg	IEC 62321 series, GC-MS	N.D.	50	1000
Benzylbutyl Phthalate (BBP)	mg/kg	IEC 62321 series, GC-MS	N.D.	50	1000
Di-(2-ethylhexyl) Phthalate(DEHP)	mg/kg	IEC 62321 series, GC-MS	N.D.	50	1000
Diisobutyl Phthalate (DIBP)	mg/kg	IEC 62321 series, GC-MS	N.D.	50	1000



# Test Report

Report No: BTT20220526836RR-1

Date: May. 28, 2022

Page 23 of 43

## Test Result (No.20):

Test Item(S)	Unit	Test Method (Reference)	Result	MDL	Limit
Cadmium(Cd)	Mg/Kg	IEC 62321 series, ICP-OES	N.D.	2	100
Lead(Pb)	Mg/Kg	IEC 62321 series, ICP-OES	N.D.	2	1000
Mercury(Hg)	Mg/Kg	IEC 62321 series, ICP-OES	N.D.	2	1000
Hexavalent Chromium(Crvi)	Mg/Kg	IEC 62321 series, UV-Vis	N.D.	2	1000
<b>Sum Of Pbbs</b>	<b>Mg/Kg</b>	<b>IEC 62321 series, GC-MS</b>	<b>N.D.</b>	<b>--</b>	<b>1000</b>
Monobromobiphenyl	Mg/Kg	IEC 62321 series, GC-MS	N.D.	5	--
Dibromobiphenyl	Mg/Kg	IEC 62321 series, GC-MS	N.D.	5	--
Tribromobiphenyl	Mg/Kg	IEC 62321 series, GC-MS	N.D.	5	--
Tetrabromobiphenyl	Mg/Kg	IEC 62321 series, GC-MS	N.D.	5	--
Pentabromobiphenyl	Mg/Kg	IEC 62321 series, GC-MS	N.D.	5	--
Hexabromobiphenyl	Mg/Kg	IEC 62321 series, GC-MS	N.D.	5	--
Heptabromobiphenyl	Mg/Kg	IEC 62321 series, GC-MS	N.D.	5	--
Octabromobiphenyl	Mg/Kg	IEC 62321 series, GC-MS	N.D.	5	--
Nonabromobiphenyl	Mg/Kg	IEC 62321 series, GC-MS	N.D.	5	--
Decabromobiphenyl	Mg/Kg	IEC 62321 series, GC-MS	N.D.	5	--
<b>Sum Of Pbdes</b>	<b>Mg/Kg</b>	<b>IEC 62321 series, GC-MS</b>	<b>N.D.</b>	<b>--</b>	<b>1000</b>
Monobromodiphenyl Ether	Mg/Kg	IEC 62321 series, GC-MS	N.D.	5	--
Dibromodiphenyl Ether	Mg/Kg	IEC 62321 series, GC-MS	N.D.	5	--
Tribromodiphenyl Ether	Mg/Kg	IEC 62321 series, GC-MS	N.D.	5	--
Tetrabromodiphenyl Ether	Mg/Kg	IEC 62321 series, GC-MS	N.D.	5	--
Pentabromodiphenyl Ether	Mg/Kg	IEC 62321 series, GC-MS	N.D.	5	--
Hexabromodiphenyl Ether	Mg/Kg	IEC 62321 series, GC-MS	N.D.	5	--
Heptabromodiphenyl Ether	Mg/Kg	IEC 62321 series, GC-MS	N.D.	5	--
Octabromodiphenyl Ether	Mg/Kg	IEC 62321 series, GC-MS	N.D.	5	--
Nonabromodiphenyl Ether	Mg/Kg	IEC 62321 series, GC-MS	N.D.	5	--
Decabromodiphenyl Ether	Mg/Kg	IEC 62321 series, GC-MS	N.D.	5	--
<b>Priority view to further restrictions of substances</b>					
Dibutyl Phthalate(DBP)	mg/kg	IEC 62321 series, GC-MS	N.D.	50	1000
Benzylbutyl Phthalate (BBP)	mg/kg	IEC 62321 series, GC-MS	N.D.	50	1000
Di-(2-ethylhexyl) Phthalate(DEHP)	mg/kg	IEC 62321 series, GC-MS	N.D.	50	1000
Diisobutyl Phthalate (DIBP)	mg/kg	IEC 62321 series, GC-MS	N.D.	50	1000



# Test Report

Report No: BTT20220526836RR-1

Date: May. 28, 2022

Page 24 of 43

## Test Result (No.21):

Test Item(S)	Unit	Test Method (Reference)	Result	MDL	Limit
Cadmium(Cd)	Mg/Kg	IEC 62321 series, ICP-OES	N.D.	2	100
Lead(Pb)	Mg/Kg	IEC 62321 series, ICP-OES	N.D.	2	1000
Mercury(Hg)	Mg/Kg	IEC 62321 series, ICP-OES	N.D.	2	1000
Hexavalent Chromium(Crvi)	Mg/Kg	IEC 62321 series, UV-Vis	N.D.	2	1000
<b>Sum Of Pbbs</b>	<b>Mg/Kg</b>	<b>IEC 62321 series, GC-MS</b>	<b>N.D.</b>	<b>--</b>	<b>1000</b>
Monobromobiphenyl	Mg/Kg	IEC 62321 series, GC-MS	N.D.	5	--
Dibromobiphenyl	Mg/Kg	IEC 62321 series, GC-MS	N.D.	5	--
Tribromobiphenyl	Mg/Kg	IEC 62321 series, GC-MS	N.D.	5	--
Tetrabromobiphenyl	Mg/Kg	IEC 62321 series, GC-MS	N.D.	5	--
Pentabromobiphenyl	Mg/Kg	IEC 62321 series, GC-MS	N.D.	5	--
Hexabromobiphenyl	Mg/Kg	IEC 62321 series, GC-MS	N.D.	5	--
Heptabromobiphenyl	Mg/Kg	IEC 62321 series, GC-MS	N.D.	5	--
Octabromobiphenyl	Mg/Kg	IEC 62321 series, GC-MS	N.D.	5	--
Nonabromobiphenyl	Mg/Kg	IEC 62321 series, GC-MS	N.D.	5	--
Decabromobiphenyl	Mg/Kg	IEC 62321 series, GC-MS	N.D.	5	--
<b>Sum Of Pbdes</b>	<b>Mg/Kg</b>	<b>IEC 62321 series, GC-MS</b>	<b>N.D.</b>	<b>--</b>	<b>1000</b>
Monobromodiphenyl Ether	Mg/Kg	IEC 62321 series, GC-MS	N.D.	5	--
Dibromodiphenyl Ether	Mg/Kg	IEC 62321 series, GC-MS	N.D.	5	--
Tribromodiphenyl Ether	Mg/Kg	IEC 62321 series, GC-MS	N.D.	5	--
Tetrabromodiphenyl Ether	Mg/Kg	IEC 62321 series, GC-MS	N.D.	5	--
Pentabromodiphenyl Ether	Mg/Kg	IEC 62321 series, GC-MS	N.D.	5	--
Hexabromodiphenyl Ether	Mg/Kg	IEC 62321 series, GC-MS	N.D.	5	--
Heptabromodiphenyl Ether	Mg/Kg	IEC 62321 series, GC-MS	N.D.	5	--
Octabromodiphenyl Ether	Mg/Kg	IEC 62321 series, GC-MS	N.D.	5	--
Nonabromodiphenyl Ether	Mg/Kg	IEC 62321 series, GC-MS	N.D.	5	--
Decabromodiphenyl Ether	Mg/Kg	IEC 62321 series, GC-MS	N.D.	5	--
<b>Priority view to further restrictions of substances</b>					
Dibutyl Phthalate(DBP)	mg/kg	IEC 62321 series, GC-MS	N.D.	50	1000
Benzylbutyl Phthalate (BBP)	mg/kg	IEC 62321 series, GC-MS	N.D.	50	1000
Di-(2-ethylhexyl) Phthalate(DEHP)	mg/kg	IEC 62321 series, GC-MS	N.D.	50	1000
Diisobutyl Phthalate (DIBP)	mg/kg	IEC 62321 series, GC-MS	N.D.	50	1000



# Test Report

Report No: BTT20220526836RR-1

Date: May. 28, 2022

Page 25 of 43

## Test Result (No.22):

Test Item(S)	Unit	Test Method (Reference)	Result	MDL	Limit
Cadmium(Cd)	Mg/Kg	IEC 62321 series, ICP-OES	N.D.	2	100
Lead(Pb)	Mg/Kg	IEC 62321 series, ICP-OES	N.D.	2	1000
Mercury(Hg)	Mg/Kg	IEC 62321 series, ICP-OES	N.D.	2	1000
Hexavalent Chromium(Crvi)	Mg/Kg	IEC 62321 series, UV-Vis	N.D.	2	1000
<b>Sum Of Pbbs</b>	<b>Mg/Kg</b>	<b>IEC 62321 series, GC-MS</b>	<b>N.D.</b>	<b>--</b>	<b>1000</b>
Monobromobiphenyl	Mg/Kg	IEC 62321 series, GC-MS	N.D.	5	--
Dibromobiphenyl	Mg/Kg	IEC 62321 series, GC-MS	N.D.	5	--
Tribromobiphenyl	Mg/Kg	IEC 62321 series, GC-MS	N.D.	5	--
Tetrabromobiphenyl	Mg/Kg	IEC 62321 series, GC-MS	N.D.	5	--
Pentabromobiphenyl	Mg/Kg	IEC 62321 series, GC-MS	N.D.	5	--
Hexabromobiphenyl	Mg/Kg	IEC 62321 series, GC-MS	N.D.	5	--
Heptabromobiphenyl	Mg/Kg	IEC 62321 series, GC-MS	N.D.	5	--
Octabromobiphenyl	Mg/Kg	IEC 62321 series, GC-MS	N.D.	5	--
Nonabromobiphenyl	Mg/Kg	IEC 62321 series, GC-MS	N.D.	5	--
Decabromobiphenyl	Mg/Kg	IEC 62321 series, GC-MS	N.D.	5	--
<b>Sum Of Pbdes</b>	<b>Mg/Kg</b>	<b>IEC 62321 series, GC-MS</b>	<b>N.D.</b>	<b>--</b>	<b>1000</b>
Monobromodiphenyl Ether	Mg/Kg	IEC 62321 series, GC-MS	N.D.	5	--
Dibromodiphenyl Ether	Mg/Kg	IEC 62321 series, GC-MS	N.D.	5	--
Tribromodiphenyl Ether	Mg/Kg	IEC 62321 series, GC-MS	N.D.	5	--
Tetrabromodiphenyl Ether	Mg/Kg	IEC 62321 series, GC-MS	N.D.	5	--
Pentabromodiphenyl Ether	Mg/Kg	IEC 62321 series, GC-MS	N.D.	5	--
Hexabromodiphenyl Ether	Mg/Kg	IEC 62321 series, GC-MS	N.D.	5	--
Heptabromodiphenyl Ether	Mg/Kg	IEC 62321 series, GC-MS	N.D.	5	--
Octabromodiphenyl Ether	Mg/Kg	IEC 62321 series, GC-MS	N.D.	5	--
Nonabromodiphenyl Ether	Mg/Kg	IEC 62321 series, GC-MS	N.D.	5	--
Decabromodiphenyl Ether	Mg/Kg	IEC 62321 series, GC-MS	N.D.	5	--
<b>Priority view to further restrictions of substances</b>					
Dibutyl Phthalate(DBP)	mg/kg	IEC 62321 series, GC-MS	N.D.	50	1000
Benzylbutyl Phthalate (BBP)	mg/kg	IEC 62321 series, GC-MS	N.D.	50	1000
Di-(2-ethylhexyl) Phthalate(DEHP)	mg/kg	IEC 62321 series, GC-MS	N.D.	50	1000
Diisobutyl Phthalate (DIBP)	mg/kg	IEC 62321 series, GC-MS	N.D.	50	1000





# Test Report

Report No: BTT20220526836RR-1

Date: May. 28, 2022

Page 26 of 43

## Test Result (No.23):

Test Item(S)	Unit	Test Method (Reference)	Result	MDL	Limit
Cadmium(Cd)	Mg/Kg	IEC 62321 series, ICP-OES	N.D.	2	100
Lead(Pb)	Mg/Kg	IEC 62321 series, ICP-OES	N.D.	2	1000
Mercury(Hg)	Mg/Kg	IEC 62321 series, ICP-OES	N.D.	2	1000
Hexavalent Chromium(Crvi)	Mg/Kg	IEC 62321 series, UV-Vis	N.D.	2	1000
<b>Sum Of Pbbs</b>	<b>Mg/Kg</b>	<b>IEC 62321 series, GC-MS</b>	<b>N.D.</b>	<b>--</b>	<b>1000</b>
Monobromobiphenyl	Mg/Kg	IEC 62321 series, GC-MS	N.D.	5	--
Dibromobiphenyl	Mg/Kg	IEC 62321 series, GC-MS	N.D.	5	--
Tribromobiphenyl	Mg/Kg	IEC 62321 series, GC-MS	N.D.	5	--
Tetrabromobiphenyl	Mg/Kg	IEC 62321 series, GC-MS	N.D.	5	--
Pentabromobiphenyl	Mg/Kg	IEC 62321 series, GC-MS	N.D.	5	--
Hexabromobiphenyl	Mg/Kg	IEC 62321 series, GC-MS	N.D.	5	--
Heptabromobiphenyl	Mg/Kg	IEC 62321 series, GC-MS	N.D.	5	--
Octabromobiphenyl	Mg/Kg	IEC 62321 series, GC-MS	N.D.	5	--
Nonabromobiphenyl	Mg/Kg	IEC 62321 series, GC-MS	N.D.	5	--
Decabromobiphenyl	Mg/Kg	IEC 62321 series, GC-MS	N.D.	5	--
<b>Sum Of Pbdes</b>	<b>Mg/Kg</b>	<b>IEC 62321 series, GC-MS</b>	<b>N.D.</b>	<b>--</b>	<b>1000</b>
Monobromodiphenyl Ether	Mg/Kg	IEC 62321 series, GC-MS	N.D.	5	--
Dibromodiphenyl Ether	Mg/Kg	IEC 62321 series, GC-MS	N.D.	5	--
Tribromodiphenyl Ether	Mg/Kg	IEC 62321 series, GC-MS	N.D.	5	--
Tetrabromodiphenyl Ether	Mg/Kg	IEC 62321 series, GC-MS	N.D.	5	--
Pentabromodiphenyl Ether	Mg/Kg	IEC 62321 series, GC-MS	N.D.	5	--
Hexabromodiphenyl Ether	Mg/Kg	IEC 62321 series, GC-MS	N.D.	5	--
Heptabromodiphenyl Ether	Mg/Kg	IEC 62321 series, GC-MS	N.D.	5	--
Octabromodiphenyl Ether	Mg/Kg	IEC 62321 series, GC-MS	N.D.	5	--
Nonabromodiphenyl Ether	Mg/Kg	IEC 62321 series, GC-MS	N.D.	5	--
Decabromodiphenyl Ether	Mg/Kg	IEC 62321 series, GC-MS	N.D.	5	--
<b>Priority view to further restrictions of substances</b>					
Dibutyl Phthalate(DBP)	mg/kg	IEC 62321 series, GC-MS	N.D.	50	1000
Benzylbutyl Phthalate (BBP)	mg/kg	IEC 62321 series, GC-MS	N.D.	50	1000
Di-(2-ethylhexyl) Phthalate(DEHP)	mg/kg	IEC 62321 series, GC-MS	N.D.	50	1000
Diisobutyl Phthalate (DIBP)	mg/kg	IEC 62321 series, GC-MS	N.D.	50	1000





# Test Report

Report No: BTT20220526836RR-1

Date: May. 28, 2022

Page 27 of 43

## Test Result (No.24):

Test Item(S)	Unit	Test Method (Reference)	Result	MDL	Limit
Cadmium(Cd)	Mg/Kg	IEC 62321 series, ICP-OES	N.D.	2	100
Lead(Pb)	Mg/Kg	IEC 62321 series, ICP-OES	N.D.	2	1000
Mercury(Hg)	Mg/Kg	IEC 62321 series, ICP-OES	N.D.	2	1000
Hexavalent Chromium(Crvi)	Mg/Kg	IEC 62321 series, UV-Vis	N.D.	2	1000
<b>Sum Of Pbbs</b>	<b>Mg/Kg</b>	<b>IEC 62321 series, GC-MS</b>	<b>N.D.</b>	<b>--</b>	<b>1000</b>
Monobromobiphenyl	Mg/Kg	IEC 62321 series, GC-MS	N.D.	5	--
Dibromobiphenyl	Mg/Kg	IEC 62321 series, GC-MS	N.D.	5	--
Tribromobiphenyl	Mg/Kg	IEC 62321 series, GC-MS	N.D.	5	--
Tetrabromobiphenyl	Mg/Kg	IEC 62321 series, GC-MS	N.D.	5	--
Pentabromobiphenyl	Mg/Kg	IEC 62321 series, GC-MS	N.D.	5	--
Hexabromobiphenyl	Mg/Kg	IEC 62321 series, GC-MS	N.D.	5	--
Heptabromobiphenyl	Mg/Kg	IEC 62321 series, GC-MS	N.D.	5	--
Octabromobiphenyl	Mg/Kg	IEC 62321 series, GC-MS	N.D.	5	--
Nonabromobiphenyl	Mg/Kg	IEC 62321 series, GC-MS	N.D.	5	--
Decabromobiphenyl	Mg/Kg	IEC 62321 series, GC-MS	N.D.	5	--
<b>Sum Of Pbdes</b>	<b>Mg/Kg</b>	<b>IEC 62321 series, GC-MS</b>	<b>N.D.</b>	<b>--</b>	<b>1000</b>
Monobromodiphenyl Ether	Mg/Kg	IEC 62321 series, GC-MS	N.D.	5	--
Dibromodiphenyl Ether	Mg/Kg	IEC 62321 series, GC-MS	N.D.	5	--
Tribromodiphenyl Ether	Mg/Kg	IEC 62321 series, GC-MS	N.D.	5	--
Tetrabromodiphenyl Ether	Mg/Kg	IEC 62321 series, GC-MS	N.D.	5	--
Pentabromodiphenyl Ether	Mg/Kg	IEC 62321 series, GC-MS	N.D.	5	--
Hexabromodiphenyl Ether	Mg/Kg	IEC 62321 series, GC-MS	N.D.	5	--
Heptabromodiphenyl Ether	Mg/Kg	IEC 62321 series, GC-MS	N.D.	5	--
Octabromodiphenyl Ether	Mg/Kg	IEC 62321 series, GC-MS	N.D.	5	--
Nonabromodiphenyl Ether	Mg/Kg	IEC 62321 series, GC-MS	N.D.	5	--
Decabromodiphenyl Ether	Mg/Kg	IEC 62321 series, GC-MS	N.D.	5	--
<b>Priority view to further restrictions of substances</b>					
Dibutyl Phthalate(DBP)	mg/kg	IEC 62321 series, GC-MS	N.D.	50	1000
Benzylbutyl Phthalate (BBP)	mg/kg	IEC 62321 series, GC-MS	N.D.	50	1000
Di-(2-ethylhexyl) Phthalate(DEHP)	mg/kg	IEC 62321 series, GC-MS	N.D.	50	1000
Diisobutyl Phthalate (DIBP)	mg/kg	IEC 62321 series, GC-MS	N.D.	50	1000



# Test Report

Report No: BTT20220526836RR-1

Date: May. 28, 2022

Page 28 of 43

## Test Result (No.25):

Test Item(S)	Unit	Test Method (Reference)	Result	MDL	Limit
Cadmium(Cd)	Mg/Kg	IEC 62321 series, ICP-OES	N.D.	2	100
Lead(Pb)	Mg/Kg	IEC 62321 series, ICP-OES	N.D.	2	1000
Mercury(Hg)	Mg/Kg	IEC 62321 series, ICP-OES	N.D.	2	1000
Hexavalent Chromium(Crvi)	Mg/Kg	IEC 62321 series, UV-Vis	N.D.	2	1000
<b>Sum Of Pbbs</b>	<b>Mg/Kg</b>	<b>IEC 62321 series, GC-MS</b>	<b>N.D.</b>	<b>--</b>	<b>1000</b>
Monobromobiphenyl	Mg/Kg	IEC 62321 series, GC-MS	N.D.	5	--
Dibromobiphenyl	Mg/Kg	IEC 62321 series, GC-MS	N.D.	5	--
Tribromobiphenyl	Mg/Kg	IEC 62321 series, GC-MS	N.D.	5	--
Tetrabromobiphenyl	Mg/Kg	IEC 62321 series, GC-MS	N.D.	5	--
Pentabromobiphenyl	Mg/Kg	IEC 62321 series, GC-MS	N.D.	5	--
Hexabromobiphenyl	Mg/Kg	IEC 62321 series, GC-MS	N.D.	5	--
Heptabromobiphenyl	Mg/Kg	IEC 62321 series, GC-MS	N.D.	5	--
Octabromobiphenyl	Mg/Kg	IEC 62321 series, GC-MS	N.D.	5	--
Nonabromobiphenyl	Mg/Kg	IEC 62321 series, GC-MS	N.D.	5	--
Decabromobiphenyl	Mg/Kg	IEC 62321 series, GC-MS	N.D.	5	--
<b>Sum Of Pbdes</b>	<b>Mg/Kg</b>	<b>IEC 62321 series, GC-MS</b>	<b>N.D.</b>	<b>--</b>	<b>1000</b>
Monobromodiphenyl Ether	Mg/Kg	IEC 62321 series, GC-MS	N.D.	5	--
Dibromodiphenyl Ether	Mg/Kg	IEC 62321 series, GC-MS	N.D.	5	--
Tribromodiphenyl Ether	Mg/Kg	IEC 62321 series, GC-MS	N.D.	5	--
Tetrabromodiphenyl Ether	Mg/Kg	IEC 62321 series, GC-MS	N.D.	5	--
Pentabromodiphenyl Ether	Mg/Kg	IEC 62321 series, GC-MS	N.D.	5	--
Hexabromodiphenyl Ether	Mg/Kg	IEC 62321 series, GC-MS	N.D.	5	--
Heptabromodiphenyl Ether	Mg/Kg	IEC 62321 series, GC-MS	N.D.	5	--
Octabromodiphenyl Ether	Mg/Kg	IEC 62321 series, GC-MS	N.D.	5	--
Nonabromodiphenyl Ether	Mg/Kg	IEC 62321 series, GC-MS	N.D.	5	--
Decabromodiphenyl Ether	Mg/Kg	IEC 62321 series, GC-MS	N.D.	5	--
<b>Priority view to further restrictions of substances</b>					
Dibutyl Phthalate(DBP)	mg/kg	IEC 62321 series, GC-MS	N.D.	50	1000
Benzylbutyl Phthalate (BBP)	mg/kg	IEC 62321 series, GC-MS	N.D.	50	1000
Di-(2-ethylhexyl) Phthalate(DEHP)	mg/kg	IEC 62321 series, GC-MS	N.D.	50	1000
Diisobutyl Phthalate (DIBP)	mg/kg	IEC 62321 series, GC-MS	N.D.	50	1000



# Test Report

Report No: BTT20220526836RR-1

Date: May. 28, 2022

Page 29 of 43

## Test Result (No.26):

Test Item(S)	Unit	Test Method (Reference)	Result	MDL	Limit
Cadmium(Cd)	Mg/Kg	IEC 62321 series, ICP-OES	N.D.	2	100
Lead(Pb)	Mg/Kg	IEC 62321 series, ICP-OES	N.D.	2	1000
Mercury(Hg)	Mg/Kg	IEC 62321 series, ICP-OES	N.D.	2	1000
Hexavalent Chromium(Crvi)	Mg/Kg	IEC 62321 series, UV-Vis	N.D.	2	1000
<b>Sum Of Pbbs</b>	<b>Mg/Kg</b>	<b>IEC 62321 series, GC-MS</b>	<b>N.D.</b>	<b>--</b>	<b>1000</b>
Monobromobiphenyl	Mg/Kg	IEC 62321 series, GC-MS	N.D.	5	--
Dibromobiphenyl	Mg/Kg	IEC 62321 series, GC-MS	N.D.	5	--
Tribromobiphenyl	Mg/Kg	IEC 62321 series, GC-MS	N.D.	5	--
Tetrabromobiphenyl	Mg/Kg	IEC 62321 series, GC-MS	N.D.	5	--
Pentabromobiphenyl	Mg/Kg	IEC 62321 series, GC-MS	N.D.	5	--
Hexabromobiphenyl	Mg/Kg	IEC 62321 series, GC-MS	N.D.	5	--
Heptabromobiphenyl	Mg/Kg	IEC 62321 series, GC-MS	N.D.	5	--
Octabromobiphenyl	Mg/Kg	IEC 62321 series, GC-MS	N.D.	5	--
Nonabromobiphenyl	Mg/Kg	IEC 62321 series, GC-MS	N.D.	5	--
Decabromobiphenyl	Mg/Kg	IEC 62321 series, GC-MS	N.D.	5	--
<b>Sum Of Pbdes</b>	<b>Mg/Kg</b>	<b>IEC 62321 series, GC-MS</b>	<b>N.D.</b>	<b>--</b>	<b>1000</b>
Monobromodiphenyl Ether	Mg/Kg	IEC 62321 series, GC-MS	N.D.	5	--
Dibromodiphenyl Ether	Mg/Kg	IEC 62321 series, GC-MS	N.D.	5	--
Tribromodiphenyl Ether	Mg/Kg	IEC 62321 series, GC-MS	N.D.	5	--
Tetrabromodiphenyl Ether	Mg/Kg	IEC 62321 series, GC-MS	N.D.	5	--
Pentabromodiphenyl Ether	Mg/Kg	IEC 62321 series, GC-MS	N.D.	5	--
Hexabromodiphenyl Ether	Mg/Kg	IEC 62321 series, GC-MS	N.D.	5	--
Heptabromodiphenyl Ether	Mg/Kg	IEC 62321 series, GC-MS	N.D.	5	--
Octabromodiphenyl Ether	Mg/Kg	IEC 62321 series, GC-MS	N.D.	5	--
Nonabromodiphenyl Ether	Mg/Kg	IEC 62321 series, GC-MS	N.D.	5	--
Decabromodiphenyl Ether	Mg/Kg	IEC 62321 series, GC-MS	N.D.	5	--
<b>Priority view to further restrictions of substances</b>					
Dibutyl Phthalate(DBP)	mg/kg	IEC 62321 series, GC-MS	N.D.	50	1000
Benzylbutyl Phthalate (BBP)	mg/kg	IEC 62321 series, GC-MS	N.D.	50	1000
Di-(2-ethylhexyl) Phthalate(DEHP)	mg/kg	IEC 62321 series, GC-MS	N.D.	50	1000
Diisobutyl Phthalate (DIBP)	mg/kg	IEC 62321 series, GC-MS	N.D.	50	1000



# Test Report

Report No: BTT20220526836RR-1

Date: May. 28, 2022

Page 30 of 43

## Test Result (No.27):

Test Item(S)	Unit	Test Method (Reference)	Result	MDL	Limit
Cadmium(Cd)	Mg/Kg	IEC 62321 series, ICP-OES	N.D.	2	100
Lead(Pb)	Mg/Kg	IEC 62321 series, ICP-OES	N.D.	2	1000
Mercury(Hg)	Mg/Kg	IEC 62321 series, ICP-OES	N.D.	2	1000
Hexavalent Chromium(Crvi)	Mg/Kg	IEC 62321 series, UV-Vis	N.D.	2	1000
<b>Sum Of Pbbs</b>	<b>Mg/Kg</b>	<b>IEC 62321 series, GC-MS</b>	<b>N.D.</b>	<b>--</b>	<b>1000</b>
Monobromobiphenyl	Mg/Kg	IEC 62321 series, GC-MS	N.D.	5	--
Dibromobiphenyl	Mg/Kg	IEC 62321 series, GC-MS	N.D.	5	--
Tribromobiphenyl	Mg/Kg	IEC 62321 series, GC-MS	N.D.	5	--
Tetrabromobiphenyl	Mg/Kg	IEC 62321 series, GC-MS	N.D.	5	--
Pentabromobiphenyl	Mg/Kg	IEC 62321 series, GC-MS	N.D.	5	--
Hexabromobiphenyl	Mg/Kg	IEC 62321 series, GC-MS	N.D.	5	--
Heptabromobiphenyl	Mg/Kg	IEC 62321 series, GC-MS	N.D.	5	--
Octabromobiphenyl	Mg/Kg	IEC 62321 series, GC-MS	N.D.	5	--
Nonabromobiphenyl	Mg/Kg	IEC 62321 series, GC-MS	N.D.	5	--
Decabromobiphenyl	Mg/Kg	IEC 62321 series, GC-MS	N.D.	5	--
<b>Sum Of Pbdes</b>	<b>Mg/Kg</b>	<b>IEC 62321 series, GC-MS</b>	<b>N.D.</b>	<b>--</b>	<b>1000</b>
Monobromodiphenyl Ether	Mg/Kg	IEC 62321 series, GC-MS	N.D.	5	--
Dibromodiphenyl Ether	Mg/Kg	IEC 62321 series, GC-MS	N.D.	5	--
Tribromodiphenyl Ether	Mg/Kg	IEC 62321 series, GC-MS	N.D.	5	--
Tetrabromodiphenyl Ether	Mg/Kg	IEC 62321 series, GC-MS	N.D.	5	--
Pentabromodiphenyl Ether	Mg/Kg	IEC 62321 series, GC-MS	N.D.	5	--
Hexabromodiphenyl Ether	Mg/Kg	IEC 62321 series, GC-MS	N.D.	5	--
Heptabromodiphenyl Ether	Mg/Kg	IEC 62321 series, GC-MS	N.D.	5	--
Octabromodiphenyl Ether	Mg/Kg	IEC 62321 series, GC-MS	N.D.	5	--
Nonabromodiphenyl Ether	Mg/Kg	IEC 62321 series, GC-MS	N.D.	5	--
Decabromodiphenyl Ether	Mg/Kg	IEC 62321 series, GC-MS	N.D.	5	--
<b>Priority view to further restrictions of substances</b>					
Dibutyl Phthalate(DBP)	mg/kg	IEC 62321 series, GC-MS	N.D.	50	1000
Benzylbutyl Phthalate (BBP)	mg/kg	IEC 62321 series, GC-MS	N.D.	50	1000
Di-(2-ethylhexyl) Phthalate(DEHP)	mg/kg	IEC 62321 series, GC-MS	N.D.	50	1000
Diisobutyl Phthalate (DIBP)	mg/kg	IEC 62321 series, GC-MS	N.D.	50	1000



# Test Report

Report No: BTT20220526836RR-1

Date: May. 28, 2022

Page 31 of 43

## Test Result (No.28):

Test Item(S)	Unit	Test Method (Reference)	Result	MDL	Limit
Cadmium(Cd)	Mg/Kg	IEC 62321 series, ICP-OES	N.D.	2	100
Lead(Pb)	Mg/Kg	IEC 62321 series, ICP-OES	N.D.	2	1000
Mercury(Hg)	Mg/Kg	IEC 62321 series, ICP-OES	N.D.	2	1000
Hexavalent Chromium(Crvi)	Mg/Kg	IEC 62321 series, UV-Vis	N.D.	2	1000
<b>Sum Of Pbbs</b>	<b>Mg/Kg</b>	<b>IEC 62321 series, GC-MS</b>	<b>N.D.</b>	<b>--</b>	<b>1000</b>
Monobromobiphenyl	Mg/Kg	IEC 62321 series, GC-MS	N.D.	5	--
Dibromobiphenyl	Mg/Kg	IEC 62321 series, GC-MS	N.D.	5	--
Tribromobiphenyl	Mg/Kg	IEC 62321 series, GC-MS	N.D.	5	--
Tetrabromobiphenyl	Mg/Kg	IEC 62321 series, GC-MS	N.D.	5	--
Pentabromobiphenyl	Mg/Kg	IEC 62321 series, GC-MS	N.D.	5	--
Hexabromobiphenyl	Mg/Kg	IEC 62321 series, GC-MS	N.D.	5	--
Heptabromobiphenyl	Mg/Kg	IEC 62321 series, GC-MS	N.D.	5	--
Octabromobiphenyl	Mg/Kg	IEC 62321 series, GC-MS	N.D.	5	--
Nonabromobiphenyl	Mg/Kg	IEC 62321 series, GC-MS	N.D.	5	--
Decabromobiphenyl	Mg/Kg	IEC 62321 series, GC-MS	N.D.	5	--
<b>Sum Of Pbdes</b>	<b>Mg/Kg</b>	<b>IEC 62321 series, GC-MS</b>	<b>N.D.</b>	<b>--</b>	<b>1000</b>
Monobromodiphenyl Ether	Mg/Kg	IEC 62321 series, GC-MS	N.D.	5	--
Dibromodiphenyl Ether	Mg/Kg	IEC 62321 series, GC-MS	N.D.	5	--
Tribromodiphenyl Ether	Mg/Kg	IEC 62321 series, GC-MS	N.D.	5	--
Tetrabromodiphenyl Ether	Mg/Kg	IEC 62321 series, GC-MS	N.D.	5	--
Pentabromodiphenyl Ether	Mg/Kg	IEC 62321 series, GC-MS	N.D.	5	--
Hexabromodiphenyl Ether	Mg/Kg	IEC 62321 series, GC-MS	N.D.	5	--
Heptabromodiphenyl Ether	Mg/Kg	IEC 62321 series, GC-MS	N.D.	5	--
Octabromodiphenyl Ether	Mg/Kg	IEC 62321 series, GC-MS	N.D.	5	--
Nonabromodiphenyl Ether	Mg/Kg	IEC 62321 series, GC-MS	N.D.	5	--
Decabromodiphenyl Ether	Mg/Kg	IEC 62321 series, GC-MS	N.D.	5	--
<b>Priority view to further restrictions of substances</b>					
Dibutyl Phthalate(DBP)	mg/kg	IEC 62321 series, GC-MS	N.D.	50	1000
Benzylbutyl Phthalate (BBP)	mg/kg	IEC 62321 series, GC-MS	N.D.	50	1000
Di-(2-ethylhexyl) Phthalate(DEHP)	mg/kg	IEC 62321 series, GC-MS	N.D.	50	1000
Diisobutyl Phthalate (DIBP)	mg/kg	IEC 62321 series, GC-MS	N.D.	50	1000





# Test Report

Report No: BTT20220526836RR-1

Date: May. 28, 2022

Page 32 of 43

## Test Result (No.29):

Test Item(S)	Unit	Test Method (Reference)	Result	MDL	Limit
Cadmium(Cd)	Mg/Kg	IEC 62321 series, ICP-OES	N.D.	2	100
Lead(Pb)	Mg/Kg	IEC 62321 series, ICP-OES	N.D.	2	1000
Mercury(Hg)	Mg/Kg	IEC 62321 series, ICP-OES	N.D.	2	1000
Hexavalent Chromium(Crvi)	Mg/Kg	IEC 62321 series, UV-Vis	N.D.	2	1000
<b>Sum Of Pbbs</b>	<b>Mg/Kg</b>	<b>IEC 62321 series, GC-MS</b>	N.D.	--	<b>1000</b>
Monobromobiphenyl	Mg/Kg	IEC 62321 series, GC-MS	N.D.	5	--
Dibromobiphenyl	Mg/Kg	IEC 62321 series, GC-MS	N.D.	5	--
Tribromobiphenyl	Mg/Kg	IEC 62321 series, GC-MS	N.D.	5	--
Tetrabromobiphenyl	Mg/Kg	IEC 62321 series, GC-MS	N.D.	5	--
Pentabromobiphenyl	Mg/Kg	IEC 62321 series, GC-MS	N.D.	5	--
Hexabromobiphenyl	Mg/Kg	IEC 62321 series, GC-MS	N.D.	5	--
Heptabromobiphenyl	Mg/Kg	IEC 62321 series, GC-MS	N.D.	5	--
Octabromobiphenyl	Mg/Kg	IEC 62321 series, GC-MS	N.D.	5	--
Nonabromobiphenyl	Mg/Kg	IEC 62321 series, GC-MS	N.D.	5	--
Decabromobiphenyl	Mg/Kg	IEC 62321 series, GC-MS	N.D.	5	--
<b>Sum Of Pbdes</b>	<b>Mg/Kg</b>	<b>IEC 62321 series, GC-MS</b>	N.D.	--	<b>1000</b>
Monobromodiphenyl Ether	Mg/Kg	IEC 62321 series, GC-MS	N.D.	5	--
Dibromodiphenyl Ether	Mg/Kg	IEC 62321 series, GC-MS	N.D.	5	--
Tribromodiphenyl Ether	Mg/Kg	IEC 62321 series, GC-MS	N.D.	5	--
Tetrabromodiphenyl Ether	Mg/Kg	IEC 62321 series, GC-MS	N.D.	5	--
Pentabromodiphenyl Ether	Mg/Kg	IEC 62321 series, GC-MS	N.D.	5	--
Hexabromodiphenyl Ether	Mg/Kg	IEC 62321 series, GC-MS	N.D.	5	--
Heptabromodiphenyl Ether	Mg/Kg	IEC 62321 series, GC-MS	N.D.	5	--
Octabromodiphenyl Ether	Mg/Kg	IEC 62321 series, GC-MS	N.D.	5	--
Nonabromodiphenyl Ether	Mg/Kg	IEC 62321 series, GC-MS	N.D.	5	--
Decabromodiphenyl Ether	Mg/Kg	IEC 62321 series, GC-MS	N.D.	5	--
<b>Priority view to further restrictions of substances</b>					
Dibutyl Phthalate(DBP)	mg/kg	IEC 62321 series, GC-MS	N.D.	50	1000
Benzylbutyl Phthalate (BBP)	mg/kg	IEC 62321 series, GC-MS	N.D.	50	1000
Di-(2-ethylhexyl) Phthalate(DEHP)	mg/kg	IEC 62321 series, GC-MS	N.D.	50	1000
Diisobutyl Phthalate (DIBP)	mg/kg	IEC 62321 series, GC-MS	N.D.	50	1000





# Test Report

Report No: BTT20220526836RR-1

Date: May. 28, 2022

Page 33 of 43

## Test Result (No.30):

Test Item(S)	Unit	Test Method (Reference)	Result	MDL	Limit
Cadmium(Cd)	Mg/Kg	IEC 62321 series, ICP-OES	N.D.	2	100
Lead(Pb)	Mg/Kg	IEC 62321 series, ICP-OES	N.D.	2	1000
Mercury(Hg)	Mg/Kg	IEC 62321 series, ICP-OES	N.D.	2	1000
Hexavalent Chromium(Crvi)	Mg/Kg	IEC 62321 series, UV-Vis	N.D.	2	1000
<b>Sum Of Pbbs</b>	<b>Mg/Kg</b>	<b>IEC 62321 series, GC-MS</b>	<b>N.D.</b>	<b>--</b>	<b>1000</b>
Monobromobiphenyl	Mg/Kg	IEC 62321 series, GC-MS	N.D.	5	--
Dibromobiphenyl	Mg/Kg	IEC 62321 series, GC-MS	N.D.	5	--
Tribromobiphenyl	Mg/Kg	IEC 62321 series, GC-MS	N.D.	5	--
Tetrabromobiphenyl	Mg/Kg	IEC 62321 series, GC-MS	N.D.	5	--
Pentabromobiphenyl	Mg/Kg	IEC 62321 series, GC-MS	N.D.	5	--
Hexabromobiphenyl	Mg/Kg	IEC 62321 series, GC-MS	N.D.	5	--
Heptabromobiphenyl	Mg/Kg	IEC 62321 series, GC-MS	N.D.	5	--
Octabromobiphenyl	Mg/Kg	IEC 62321 series, GC-MS	N.D.	5	--
Nonabromobiphenyl	Mg/Kg	IEC 62321 series, GC-MS	N.D.	5	--
Decabromobiphenyl	Mg/Kg	IEC 62321 series, GC-MS	N.D.	5	--
<b>Sum Of Pbdes</b>	<b>Mg/Kg</b>	<b>IEC 62321 series, GC-MS</b>	<b>N.D.</b>	<b>--</b>	<b>1000</b>
Monobromodiphenyl Ether	Mg/Kg	IEC 62321 series, GC-MS	N.D.	5	--
Dibromodiphenyl Ether	Mg/Kg	IEC 62321 series, GC-MS	N.D.	5	--
Tribromodiphenyl Ether	Mg/Kg	IEC 62321 series, GC-MS	N.D.	5	--
Tetrabromodiphenyl Ether	Mg/Kg	IEC 62321 series, GC-MS	N.D.	5	--
Pentabromodiphenyl Ether	Mg/Kg	IEC 62321 series, GC-MS	N.D.	5	--
Hexabromodiphenyl Ether	Mg/Kg	IEC 62321 series, GC-MS	N.D.	5	--
Heptabromodiphenyl Ether	Mg/Kg	IEC 62321 series, GC-MS	N.D.	5	--
Octabromodiphenyl Ether	Mg/Kg	IEC 62321 series, GC-MS	N.D.	5	--
Nonabromodiphenyl Ether	Mg/Kg	IEC 62321 series, GC-MS	N.D.	5	--
Decabromodiphenyl Ether	Mg/Kg	IEC 62321 series, GC-MS	N.D.	5	--
<b>Priority view to further restrictions of substances</b>					
Dibutyl Phthalate(DBP)	mg/kg	IEC 62321 series, GC-MS	N.D.	50	1000
Benzylbutyl Phthalate (BBP)	mg/kg	IEC 62321 series, GC-MS	N.D.	50	1000
Di-(2-ethylhexyl) Phthalate(DEHP)	mg/kg	IEC 62321 series, GC-MS	N.D.	50	1000
Diisobutyl Phthalate (DIBP)	mg/kg	IEC 62321 series, GC-MS	N.D.	50	1000



# Test Report

Report No: BTT20220526836RR-1

Date: May. 28, 2022

Page 34 of 43

## Test Result (No.31):

Test Item(S)	Unit	Test Method (Reference)	Result	MDL	Limit
Cadmium(Cd)	Mg/Kg	IEC 62321 series, ICP-OES	N.D.	2	100
Lead(Pb)	Mg/Kg	IEC 62321 series, ICP-OES	N.D.	2	1000
Mercury(Hg)	Mg/Kg	IEC 62321 series, ICP-OES	N.D.	2	1000
Hexavalent Chromium(Crvi)	Mg/Kg	IEC 62321 series, UV-Vis	N.D.	2	1000
<b>Sum Of Pbbs</b>	<b>Mg/Kg</b>	<b>IEC 62321 series, GC-MS</b>	<b>N.D.</b>	<b>--</b>	<b>1000</b>
Monobromobiphenyl	Mg/Kg	IEC 62321 series, GC-MS	N.D.	5	--
Dibromobiphenyl	Mg/Kg	IEC 62321 series, GC-MS	N.D.	5	--
Tribromobiphenyl	Mg/Kg	IEC 62321 series, GC-MS	N.D.	5	--
Tetrabromobiphenyl	Mg/Kg	IEC 62321 series, GC-MS	N.D.	5	--
Pentabromobiphenyl	Mg/Kg	IEC 62321 series, GC-MS	N.D.	5	--
Hexabromobiphenyl	Mg/Kg	IEC 62321 series, GC-MS	N.D.	5	--
Heptabromobiphenyl	Mg/Kg	IEC 62321 series, GC-MS	N.D.	5	--
Octabromobiphenyl	Mg/Kg	IEC 62321 series, GC-MS	N.D.	5	--
Nonabromobiphenyl	Mg/Kg	IEC 62321 series, GC-MS	N.D.	5	--
Decabromobiphenyl	Mg/Kg	IEC 62321 series, GC-MS	N.D.	5	--
<b>Sum Of Pbdes</b>	<b>Mg/Kg</b>	<b>IEC 62321 series, GC-MS</b>	<b>N.D.</b>	<b>--</b>	<b>1000</b>
Monobromodiphenyl Ether	Mg/Kg	IEC 62321 series, GC-MS	N.D.	5	--
Dibromodiphenyl Ether	Mg/Kg	IEC 62321 series, GC-MS	N.D.	5	--
Tribromodiphenyl Ether	Mg/Kg	IEC 62321 series, GC-MS	N.D.	5	--
Tetrabromodiphenyl Ether	Mg/Kg	IEC 62321 series, GC-MS	N.D.	5	--
Pentabromodiphenyl Ether	Mg/Kg	IEC 62321 series, GC-MS	N.D.	5	--
Hexabromodiphenyl Ether	Mg/Kg	IEC 62321 series, GC-MS	N.D.	5	--
Heptabromodiphenyl Ether	Mg/Kg	IEC 62321 series, GC-MS	N.D.	5	--
Octabromodiphenyl Ether	Mg/Kg	IEC 62321 series, GC-MS	N.D.	5	--
Nonabromodiphenyl Ether	Mg/Kg	IEC 62321 series, GC-MS	N.D.	5	--
Decabromodiphenyl Ether	Mg/Kg	IEC 62321 series, GC-MS	N.D.	5	--
<b>Priority view to further restrictions of substances</b>					
Dibutyl Phthalate(DBP)	mg/kg	IEC 62321 series, GC-MS	N.D.	50	1000
Benzylbutyl Phthalate (BBP)	mg/kg	IEC 62321 series, GC-MS	N.D.	50	1000
Di-(2-ethylhexyl) Phthalate(DEHP)	mg/kg	IEC 62321 series, GC-MS	N.D.	50	1000
Diisobutyl Phthalate (DIBP)	mg/kg	IEC 62321 series, GC-MS	N.D.	50	1000



# Test Report

Report No: BTT20220526836RR-1

Date: May. 28, 2022

Page 35 of 43

## Test Result (No.32):

Test Item(S)	Unit	Test Method (Reference)	Result	MDL	Limit
Cadmium(Cd)	Mg/Kg	IEC 62321 series, ICP-OES	N.D.	2	100
Lead(Pb)	Mg/Kg	IEC 62321 series, ICP-OES	N.D.	2	1000
Mercury(Hg)	Mg/Kg	IEC 62321 series, ICP-OES	N.D.	2	1000
Hexavalent Chromium(Crvi)	Mg/Kg	IEC 62321 series, UV-Vis	N.D.	2	1000
<b>Sum Of Pbbs</b>	<b>Mg/Kg</b>	<b>IEC 62321 series, GC-MS</b>	<b>N.D.</b>	<b>--</b>	<b>1000</b>
Monobromobiphenyl	Mg/Kg	IEC 62321 series, GC-MS	N.D.	5	--
Dibromobiphenyl	Mg/Kg	IEC 62321 series, GC-MS	N.D.	5	--
Tribromobiphenyl	Mg/Kg	IEC 62321 series, GC-MS	N.D.	5	--
Tetrabromobiphenyl	Mg/Kg	IEC 62321 series, GC-MS	N.D.	5	--
Pentabromobiphenyl	Mg/Kg	IEC 62321 series, GC-MS	N.D.	5	--
Hexabromobiphenyl	Mg/Kg	IEC 62321 series, GC-MS	N.D.	5	--
Heptabromobiphenyl	Mg/Kg	IEC 62321 series, GC-MS	N.D.	5	--
Octabromobiphenyl	Mg/Kg	IEC 62321 series, GC-MS	N.D.	5	--
Nonabromobiphenyl	Mg/Kg	IEC 62321 series, GC-MS	N.D.	5	--
Decabromobiphenyl	Mg/Kg	IEC 62321 series, GC-MS	N.D.	5	--
<b>Sum Of Pbdes</b>	<b>Mg/Kg</b>	<b>IEC 62321 series, GC-MS</b>	<b>N.D.</b>	<b>--</b>	<b>1000</b>
Monobromodiphenyl Ether	Mg/Kg	IEC 62321 series, GC-MS	N.D.	5	--
Dibromodiphenyl Ether	Mg/Kg	IEC 62321 series, GC-MS	N.D.	5	--
Tribromodiphenyl Ether	Mg/Kg	IEC 62321 series, GC-MS	N.D.	5	--
Tetrabromodiphenyl Ether	Mg/Kg	IEC 62321 series, GC-MS	N.D.	5	--
Pentabromodiphenyl Ether	Mg/Kg	IEC 62321 series, GC-MS	N.D.	5	--
Hexabromodiphenyl Ether	Mg/Kg	IEC 62321 series, GC-MS	N.D.	5	--
Heptabromodiphenyl Ether	Mg/Kg	IEC 62321 series, GC-MS	N.D.	5	--
Octabromodiphenyl Ether	Mg/Kg	IEC 62321 series, GC-MS	N.D.	5	--
Nonabromodiphenyl Ether	Mg/Kg	IEC 62321 series, GC-MS	N.D.	5	--
Decabromodiphenyl Ether	Mg/Kg	IEC 62321 series, GC-MS	N.D.	5	--
<b>Priority view to further restrictions of substances</b>					
Dibutyl Phthalate(DBP)	mg/kg	IEC 62321 series, GC-MS	N.D.	50	1000
Benzylbutyl Phthalate (BBP)	mg/kg	IEC 62321 series, GC-MS	N.D.	50	1000
Di-(2-ethylhexyl) Phthalate(DEHP)	mg/kg	IEC 62321 series, GC-MS	N.D.	50	1000
Diisobutyl Phthalate (DIBP)	mg/kg	IEC 62321 series, GC-MS	N.D.	50	1000



# Test Report

Report No: BTT20220526836RR-1

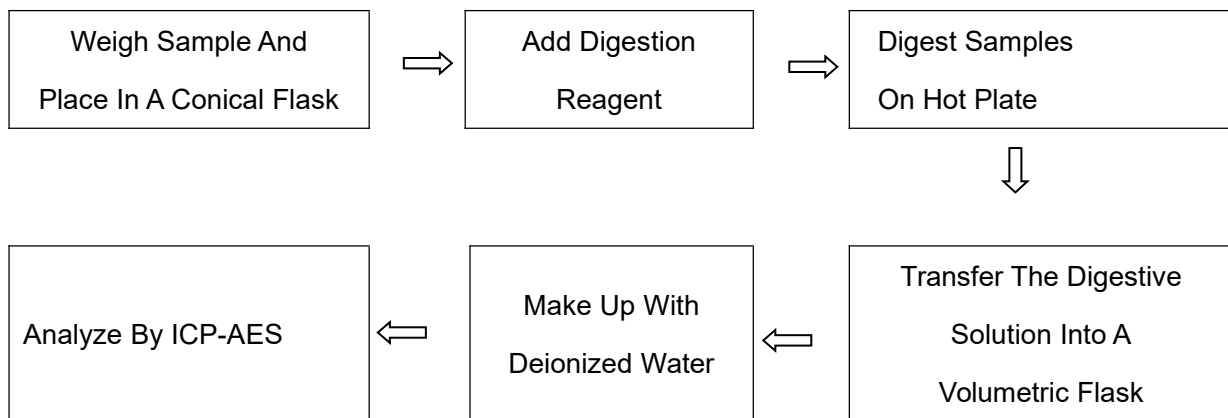
Date: May. 28, 2022

Page 36 of 43

- Note:**
1. Mg/Kg= Ppm
  2. N.D.= Not Detected(<MDL)
  3. MDL = Method Detection Limit
  4. -- = No Testing

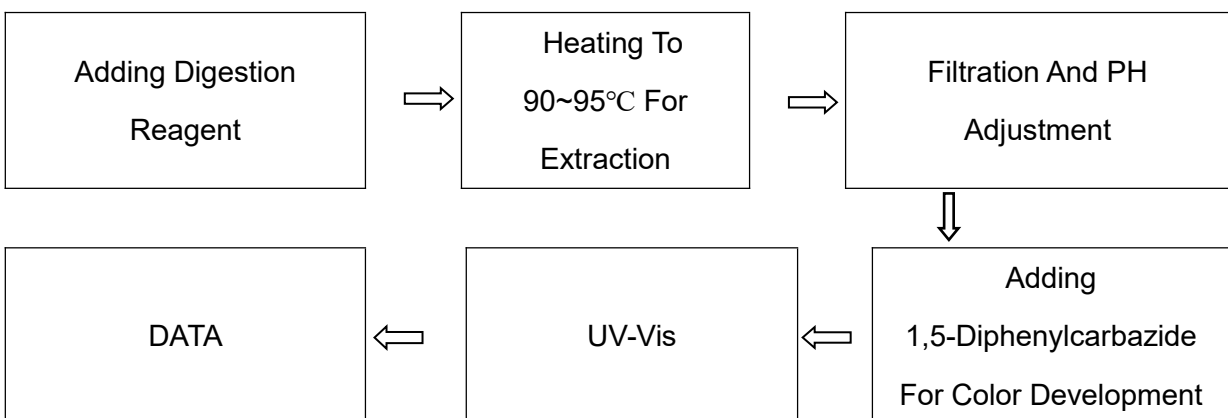
## Test Process:

### 1. Test For Cd/Pb Content



### 2. Test For Chromium(VI)Content

#### Nonmetallic Material



#### Metallic Material

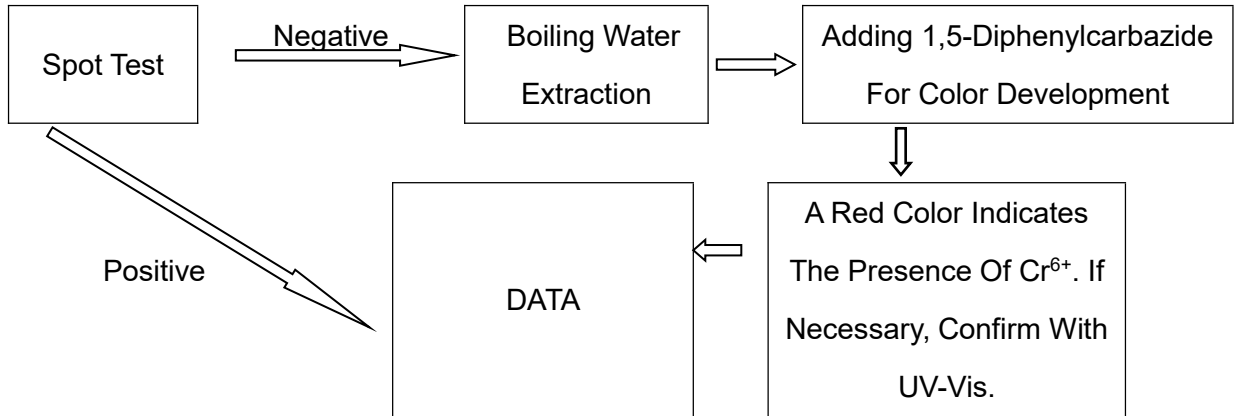


# Test Report

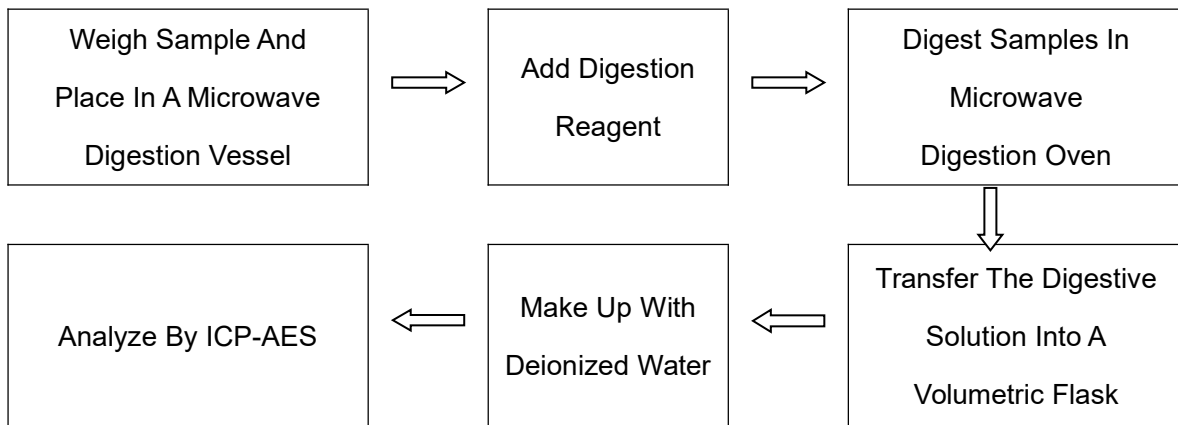
Report No: BTT20220526836RR-1

Date: May. 28, 2022

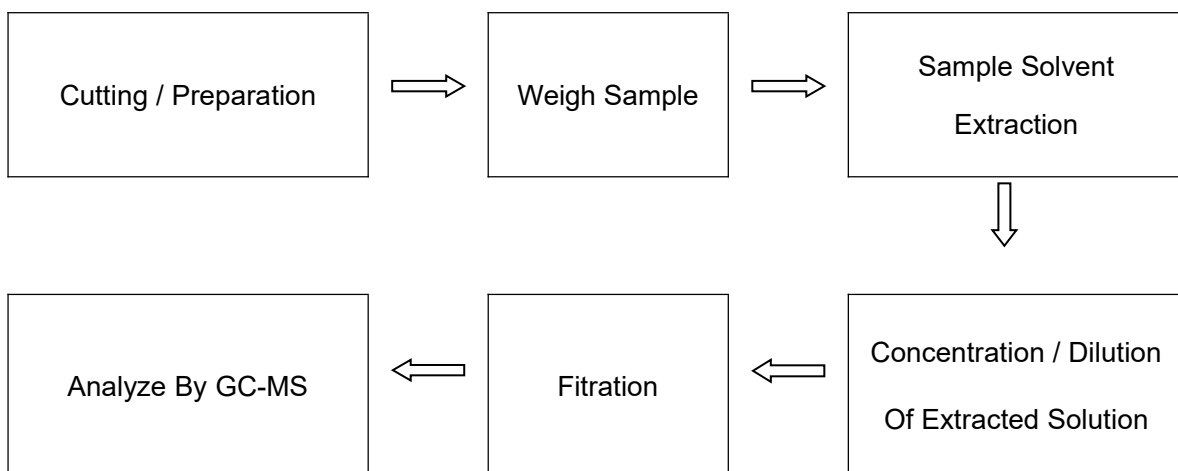
Page 37 of 43



### 3. Test For Hg Contents



### 4. Test For Pbbs,PBDES







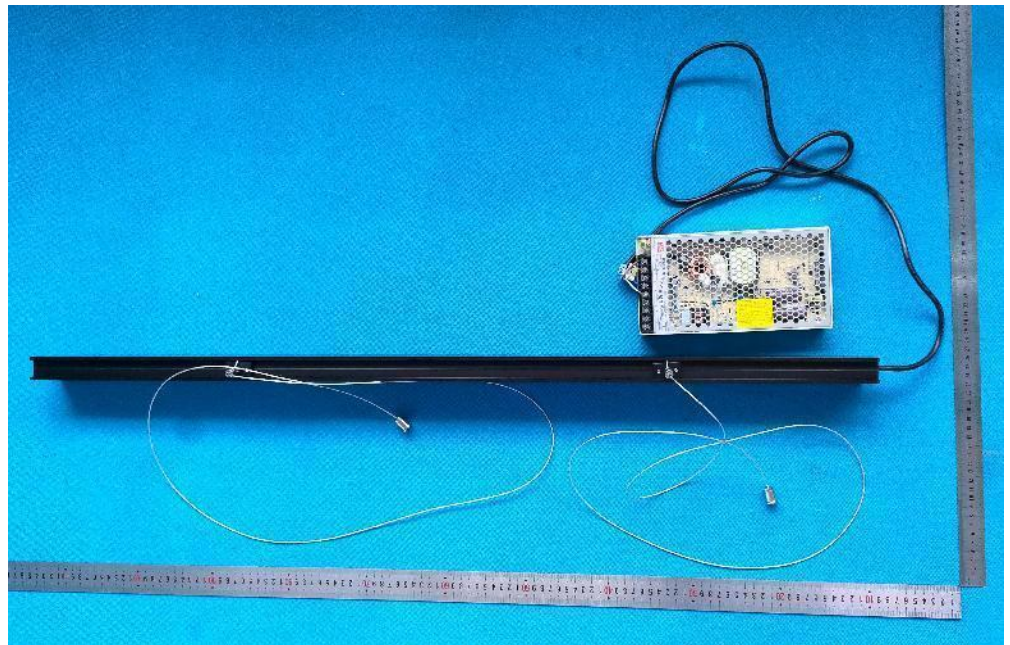
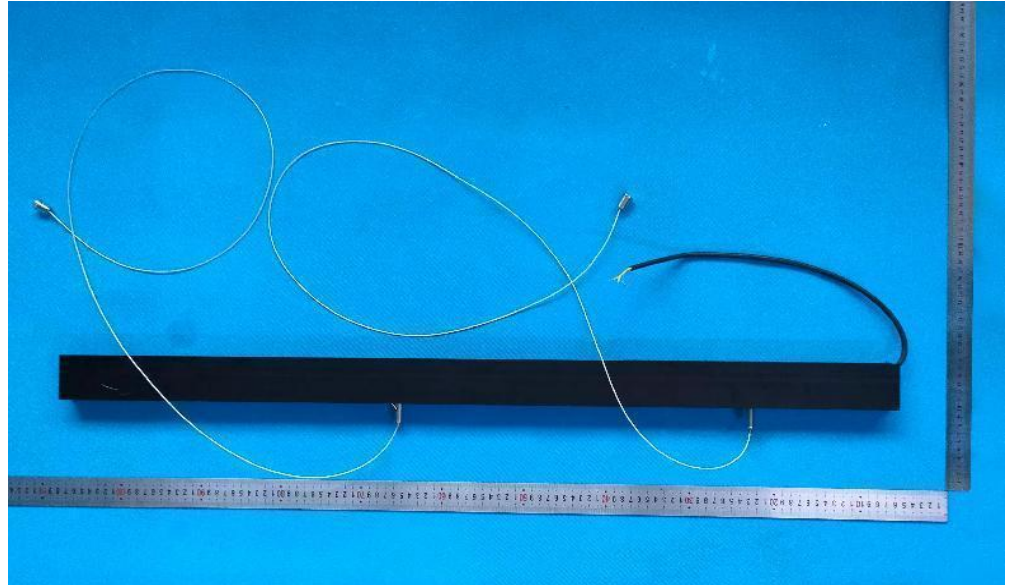
# Test Report

Report No: BTT20220526836RR-1

Date: May. 28, 2022

Page 38 of 43

## Sample Photo:







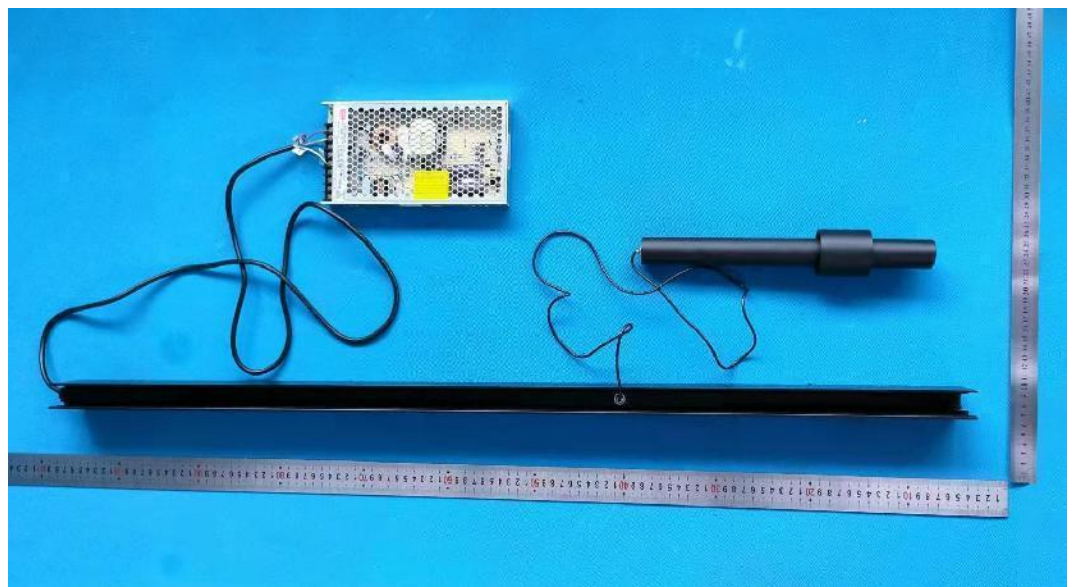
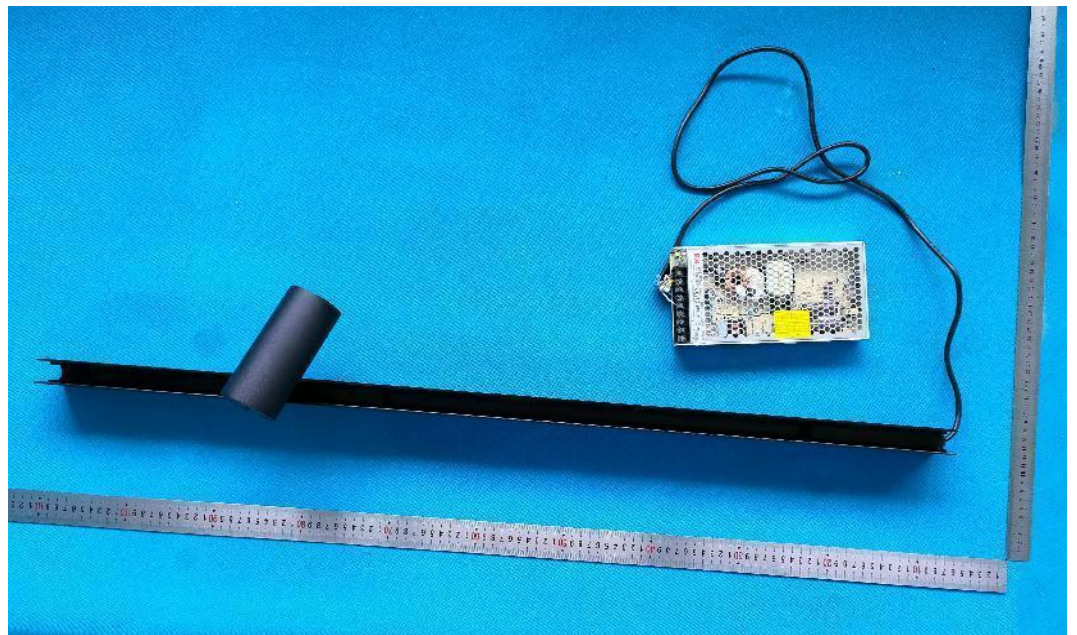
# Test Report

Report No: BTT20220526836RR-1

Date: May. 28, 2022

Page 39 of 43

## Sample Photo:





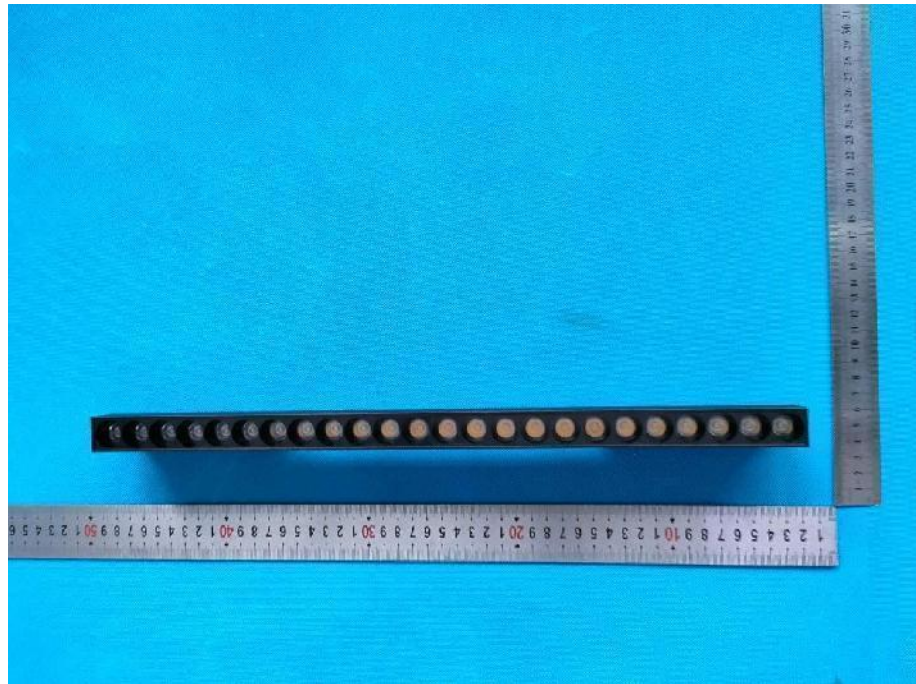
# Test Report

Report No: BTT20220526836RR-1

Date: May. 28, 2022

Page 40 of 43

## Sample Photo:







# Test Report

Report No: BTT20220526836RR-1

Date: May. 28, 2022

Page 41 of 43

## Sample Photo:







# Test Report

Report No: BTT20220526836RR-1

Date: May. 28, 2022

Page 42 of 43

## Sample Photo:







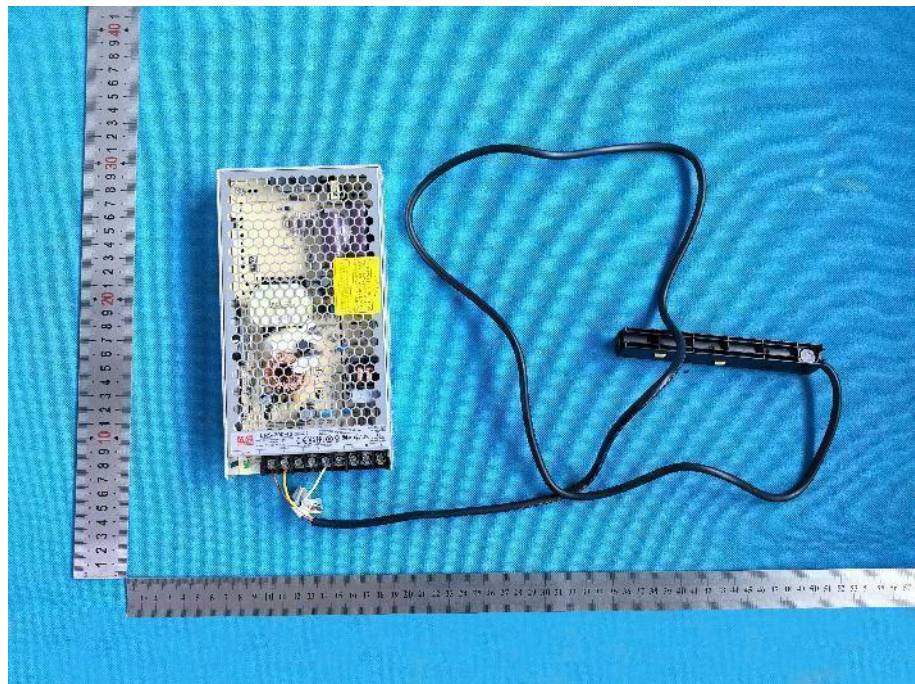
# Test Report

Report No: BTT20220526836RR-1

Date: May. 28, 2022

Page 43 of 43

## Sample Photo:



\*\*\* End Of Report \*\*\*