

ISTA 6 - Amazon.com – SIOC - A Test Report_External

VERSION DATE: 5/9/2018

ITEM INFORMATION

Vendor/Seller Name: LP FITNESS GROUP LLC DBA LIFEPRO FITNESS**ASIN:** ASIN B09GH731SV B093QHW8LB B08HPPBPLT B08XJYLWDK MODEL NUMBER LP-FLXSTP-BLU LP-FLXSTP-GRY LP-FLXSTPLS-BLU LP-FLXSTRDN-BLK**Item:** 8168**Certification Passed:**

- Pass / Frustration Free Packaging (FFP)
- Pass / Ships in Own Container (SIOC)
- Fail / Enforced Over Box (EOB)

LAB INFORMATION

Testing Lab: SGS-CSTC Standards Technical Co., Ltd Shunde Branch**Location:** Shunde of Foshan, Guangdong, China**Date of Test:** 12/1/2022**ISTA Member/ Lab Tech:** ST-2320/ Karl Zhou

Signed for and on behalf of
SGS-CSTC Standards Technical Services Co., Ltd. Xiamen Branch



Beck Hong
Authorized Signatory



SGS-CSTC Standards Technical Services Co., Ltd.
Xiamen Branch Testing Center Hardlines

Unless otherwise agreed in writing, this document is issued by the Company subject to its General Conditions of Service printed overleaf, available on request or accessible at <http://www.sgs.com/en/Terms-and-Conditions.aspx> and, for electronic format documents, subject to Terms and Conditions for Electronic Documents at <http://www.sgs.com/en/Terms-and-Conditions/Terms-e-Documents.aspx>. Attention is drawn to the limitation of liability, indemnification and jurisdiction issues defined therein. Any holder of this document is advised that information contained hereon reflects the Company's findings at the time of its intervention only and within the limits of Client's instructions, if any. The Company's sole responsibility is to its Client and this document does not exonerate parties to a transaction from exercising all their rights and obligations under the transaction documents. This document cannot be reproduced except in full, without prior written approval of the Company. Any unauthorized alteration, forgery or falsification of the content or appearance of this document is unlawful and offenders may be prosecuted to the fullest extent of the law. Unless otherwise stated the results shown in this test report refer only to the sample(s) tested and such sample(s) are retained for 30 days only.

Attention: To check the authenticity of testing / inspection report & certificate, please contact us at telephone: (86-755) 8307 1443, or email: CN.Doccheck@sgs.com

No.31 Xianghong Road, XiangAn Torch Industrial Zone, Xiamen, Fujian Province, China 361101 t (86-592) 5766537 f (86-592) 5766460 www.sgs.com.cn
中国·福建·厦门·火炬(翔安)产业区翔虹路31号 邮编: 361101 t (86-592) 5766537 f (86-592) 5766460 e sgs.china@sgs.com

Member of the SGS Group (SGS SA)

TEST RESULTS

Tested Item Summary		
Number of Samples Tested	Number of Samples Passed	Number of Samples Failed
1	1	0

Post Test Comments:

Overview	The product was over packaged in a double wall corrugated box. The master container is stitched (double & diagonal) at seam joints, secured by pressure sensitive tape & fixation strap. The packaged product remained intact after all test blocks.
Product Condition	Product was in good condition after testing
Packaging Condition	Packaging was in good condition after testing. The over pack box has some crushed corners. The inside EPS foam packaging was in good condition.

LAB TEST REQUEST {filled out by requestor}

Test Requestor	/
Project Name	ISTA 6-Amazon.com-SIOC:2018 -Type A
Submission Date	11/23/2022
Due Date	12/1/2022

ASIN	Manufacturer	Description
ASIN B09GH731SV B093QHW8LB B08HPPBPLT B08XJYLWDK MODEL NUMBER LP-FLXSTP-BLU LP-FLXSTP-GRY LP- FLXSTPLS-BLU LP- FLXSTRDN-BLK	SHANGHAI G-STAR SPORTS CO., LTD.	FlexStride Plus



SGS-CSTC Standards Technical Services Co., Ltd.
Xiamen Branch Testing Center Hardlines

Unless otherwise agreed in writing, this document is issued by the Company subject to its General Conditions of Service printed overleaf, available on request or accessible at <http://www.sgs.com/en/Terms-and-Conditions.aspx> and, for electronic format documents, subject to Terms and Conditions for Electronic Documents at <http://www.sgs.com/en/Terms-and-Conditions/Terms-e-Documents.aspx>. Attention is drawn to the limitation of liability, indemnification and jurisdiction issues defined therein. Any holder of this document is advised that information contained hereon reflects the Company's findings at the time of its intervention only and within the limits of Client's instructions, if any. The Company's sole responsibility is to its Client and this document does not exonerate parties to a transaction from exercising all their rights and obligations under the transaction documents. This document cannot be reproduced except in full, without prior written approval of the Company. Any unauthorized alteration, forgery or falsification of the content or appearance of this document is unlawful and offenders may be prosecuted to the fullest extent of the law. Unless otherwise stated the results shown in this test report refer only to the sample(s) tested and such sample(s) are retained for 30 days only.

Attention: To check the authenticity of testing / inspection report & certificate, please contact us at telephone: (86-755) 8307 1443, or email: CN.Doccheck@sgs.com

No.31 Xianghong Road, XiangAn Torch Industrial Zone, Xiamen, Fujian Province, China 361101 t (86-592) 5766537 f (86-592) 5766460 www.sgsgroup.com.cn
中国·福建·厦门·火炬(翔安)产业区翔虹路31号 邮编: 361101 t (86-592) 5766537 f (86-592) 5766460 e sgs.china@sgs.com

Package Dimension	Catalog Dims and girth: 24.5 IN L X 14.8 IN W X 12.8 IN H Actual Dims by lab: 24-5/8" L X 14-5/8" W X 13" H and / Girth: 79-7/8"
Package Weight	Catalog Weight: 31.5 LBS Actual Weight by lab: 31.45 lb
Classification 1	SIOC
Classification 2	Parcel
Test Type	ISTA 6 – Amazon.com SIOC - A
Fragile/Non-Fragile	Non-Fragile
Value Add Packaging (VAP)	Yes
Value Add Packaging (VAP) Info	Material specifications: corrugated board & EPS foam & EPE foam & plastic bag & plastic film & corner post
Total Test Samples	1 unit
Additional Notes	N/A

PRE-TEST INSPECTION {filled out by lab}

Product Condition	Package was not opened before testing to review product.
Package Condition	Package was in new condition before testing.
Package Condition before testing	<input checked="" type="checkbox"/> ORIGINAL as arrived in the lab for testing <input type="checkbox"/> NEW re-packaged with new materials before testing
Corrugated Info (Box Cert if available)	no Box Cert
Dunnage Info	N/A
Additional Notes	N/A

Remark: SGS Ref. No. is SDHL2211023990PK. This test was subcontracted to Shunde Branch, SGS-CSTC Co., Ltd.



SGS-CSTC Inspection & Testing Services Co., Ltd.
Xiamen Branch Testing Center Hardlines









Unless otherwise agreed in writing, this document is issued by the Company subject to its General Conditions of Service printed overleaf, available on request or accessible at <http://www.sgs.com/en/Terms-and-Conditions.aspx> and, for electronic format documents, subject to Terms and Conditions for Electronic Documents at <http://www.sgs.com/en/Terms-and-Conditions/Terms-e-Documents.aspx>. Attention is drawn to the limitation of liability, indemnification and jurisdiction issues defined therein. Any holder of this document is advised that information contained hereon reflects the Company's findings at the time of its intervention only and within the limits of Client's instructions, if any. The Company's sole responsibility is to its Client and this document does not exonerate parties to a transaction from exercising all their rights and obligations under the transaction documents. This document cannot be reproduced except in full, without prior written approval of the Company. Any unauthorized alteration, forgery or falsification of the content or appearance of this document is unlawful and offenders may be prosecuted to the fullest extent of the law. Unless otherwise stated the results shown in this test report refer only to the sample(s) tested and such sample(s) are retained for 30 days only.
Attention: To check the authenticity of testing / inspection report & certificate, please contact us at telephone: (86-755) 8307 1443, or email: CN.Doccheck@sgs.com

No. 31 Xianghong Road, Xiang'an Torch Industrial Zone, Xiamen, Fujian Province, China 361101 t (86-592) 5766537 f (86-592) 5766460 www.sgs.com.cn
中国·福建·厦门·火炬(翔安)产业区翔虹路31号 邮编: 361101 t (86-592) 5766537 f (86-592) 5766460 e sgs.china@sgs.com

Member of the SGS Group (SGS SA)

PRE-TEST PICTURES

Six sides of the ASIN package should be numbered and photographed. If a box cert is present it should be taken and recorded. Isometric picture views should be taken as called out below. Pictures of special call outs and or damage should have description of location and detailed information in the text box below the picture.

		
Side 1	Side 2	Side 3
		
Side 4	Side 5	Side 6
<p>NA</p>		
Box Cert (If Applicable)	ISO #1 Side 1/2/5	ISO #2 Sides 3/4/6



SGS-CSTC Xi'an Branch
 检验检测专用章
 Inspection & Testing Services
 Xi'an Branch

Unless otherwise agreed in writing, this document is issued by the Company subject to its General Conditions of Service printed overleaf, available on request or accessible at <http://www.sgs.com/en/Terms-and-Conditions.aspx> and, for electronic format documents, subject to Terms and Conditions for Electronic Documents at <http://www.sgs.com/en/Terms-and-Conditions/Terms-e-Documents.aspx>. Attention is drawn to the limitation of liability, indemnification and jurisdiction issues defined therein. Any holder of this document is advised that information contained hereon reflects the Company's findings at the time of its intervention only and within the limits of Client's instructions, if any. The Company's sole responsibility is to its Client and this document does not exonerate parties to a transaction from exercising all their rights and obligations under the transaction documents. This document cannot be reproduced except in full, without prior written approval of the Company. Any unauthorized alteration, forgery or falsification of the content or appearance of this document is unlawful and offenders may be prosecuted to the fullest extent of the law. Unless otherwise stated the results shown in this test report refer only to the sample(s) tested and such sample(s) are retained for 30 days only.

Attention: To check the authenticity of testing / inspection report & certificate, please contact us at telephone: (86-755) 8307 1443, or email: CN.Doccheck@sgs.com

No.31 Xianghong Road, XiangAn Torch Industrial Zone, Xiamen, Fujian Province, China 361101 t (86-592) 5766537 f (86-592) 5766460 www.sgs.com.cn
 中国·福建·厦门·火炬(翔安)产业区翔虹路31号 邮编: 361101 t (86-592) 5766537 f (86-592) 5766460 e sgs.china@sgs.com

TEST DETAIL

Items in black were completed and values updated. Items left in gray were not completed.

Test	Value	P/F	P/F	P/F	P/F	P/F	P/F	OBSERVATIONS
BLOCK 1: Temp and Humidity	26.2°C, 55%RH							Ambient Lab Temp 12+ hours
BLOCK 2: Drop 1-7	18 INCHES	P	NA	NA	NA	NA	NA	Slight corner crushing to box
BLOCK 2: Drop 8	36 INCHES	P	NA	NA	NA	NA	NA	Face 3 drop and no visible package damage
BLOCK 2: Drop 9	18 INCHES	P	NA	NA	NA	NA	NA	Face 3 drop and no visible package damage
BLOCK 12: Vib with Top Load Face 3	120 Lbs.	P	NA	NA	NA	NA	NA	60mintues and no visible package damage
BLOCK 12: Vib with Top Load Face 4	105 Lbs.	P	NA	NA	NA	NA	NA	30mintues and no visible package damage
BLOCK 12: Vib with Top Load Face 6	60 Lbs.	P	NA	NA	NA	NA	NA	30mintues and no visible package damage
BLOCK 12: Vib Face 3 (Pick-Up Truck)	0 Lbs.	P	NA	NA	NA	NA	NA	30mintues and no visible package damage
BLOCK 15: Drop 10-15	18 INCHES	P	NA	NA	NA	NA	NA	Slight corner crushing to box
BLOCK 15: Drop 16	36 INCHES	P	NA	NA	NA	NA	NA	Face 3 drop and no visible package damage
BLOCK 15: Drop 17	18 INCHES	P	NA	NA	NA	NA	NA	Hazard Drop on Face 3, and no visible package damage
BLOCK 21: Rotational Edge Drop	Pass/fail	NA	NA	NA	NA	NA	NA	
BLOCK 22: Full Rotational Flat Drop	Pass/fail	NA	NA	NA	NA	NA	NA	
BLOCK 23: Bridge Impact	Pass/fail	NA	NA	NA	NA	NA	NA	
BLOCK 24: Concentrated Edge Impact	Pass/fail	NA	NA	NA	NA	NA	NA	
BLOCK 25: Leak Test	Pass/fail	NA	NA	NA	NA	NA	NA	


 SGS-CSTC Standards Technical Services Co., Ltd.
 Xiamen Branch Testing Center Hardlines

Unless otherwise agreed in writing, this document is issued by the Company subject to its General Conditions of Service printed overleaf, available on request or accessible at <http://www.sgs.com/en/Terms-and-Conditions.aspx> and, for electronic format documents, subject to Terms and Conditions for Electronic Documents at <http://www.sgs.com/en/Terms-and-Conditions/Terms-e-Documents.aspx>. Attention is drawn to the limitation of liability, indemnification and jurisdiction issues defined therein. Any holder of this document is advised that information contained hereon reflects the Company's findings at the time of its intervention only and within the limits of Client's instructions, if any. The Company's sole responsibility is to its Client and this document does not exonerate parties to a transaction from exercising all their rights and obligations under the transaction documents. This document cannot be reproduced except in full, without prior written approval of the Company. Any unauthorized alteration, forgery or falsification of the content or appearance of this document is unlawful and offenders may be prosecuted to the fullest extent of the law. Unless otherwise stated the results shown in this test report refer only to the sample(s) tested and such sample(s) are retained for 30 days only.

Attention: To check the authenticity of testing / inspection report & certificate, please contact us at telephone: (86-755) 8307 1443, or email: CN.Doccheck@sgs.com

No.31 Xianghong Road, XiangAn Torch Industrial Zone, Xiamen, Fujian Province, China 361101 t (86-592) 5766537 f (86-592) 5766460 www.sgs.com.cn
 中国·福建·厦门·火炬(翔安)产业区翔虹路31号 邮编: 361101 t (86-592) 5766537 f (86-592) 5766460 e sgs.china@sgs.com

TEST PICTURES

Pictures should be taken of each block test set up along with a post picture taken of the item at the end of each test block. Additional pictures of damage should have locations noted, size of damages measured, and written in text box below them.



Unless otherwise agreed in writing, this document is issued by the Company subject to its General Conditions of Service printed overleaf, available on request or accessible at <http://www.sgs.com/en/Terms-and-Conditions.aspx> and, for electronic format documents, subject to Terms and Conditions for Electronic Documents at <http://www.sgs.com/en/Terms-and-Conditions/Terms-e-Document.aspx>. Attention is drawn to the limitation of liability, indemnification and jurisdiction issues defined therein. Any holder of this document is advised that information contained hereon reflects the Company's findings at the time of its intervention only and within the limits of Client's instructions, if any. The Company's sole responsibility is to its Client and this document does not exonerate parties to a transaction from exercising all their rights and obligations under the transaction documents. This document cannot be reproduced except in full, without prior written approval of the Company. Any unauthorized alteration, forgery or falsification of the content or appearance of this document is unlawful and offenders may be prosecuted to the fullest extent of the law. Unless otherwise stated the results shown in this test report refer only to the sample(s) tested and such sample(s) are retained for 30 days only.

Attention: To check the authenticity of testing / inspection report & certificate, please contact us at telephone: (86-755) 8307 1443, or email: CN.Doccheck@sgs.com

SGS-CSTC Standards Technical Services Co., Ltd.
Xiamen Branch Testing Center Hardlines

No.31 Xianghong Road, XiangAn Torch Industrial Zone, Xiamen, Fujian Province, China 361101 t (86-592) 5766537 f (86-592) 5766460 www.sgsgroup.com.cn
中国·福建·厦门·火炬(翔安)产业区翔虹路31号 邮编: 361101 t (86-592) 5766537 f (86-592) 5766460 e sgs.china@sgs.com

Member of the SGS Group (SGS SA)

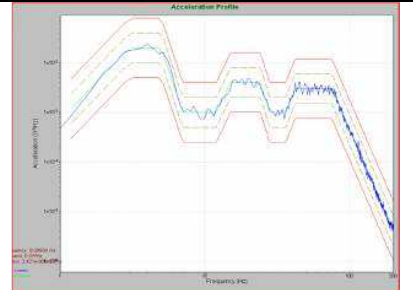
TEST PICTURES {continued}



Block 12 Face 6 Test Set up



Block 12 Face 6 Post Test Item Picture



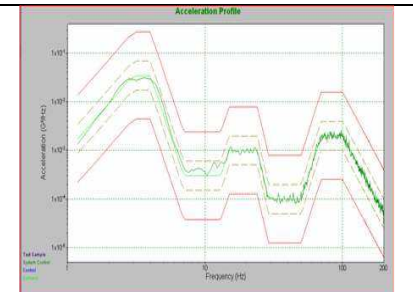
Block 12 Face 6 Test Vibration Profile



Block 12 Face 3 (Pick-Up) Test Set up



Block 12 Face 3 Post Test Item Picture



Block 12 Face 3 Test Vibration Profile



Block 15 Test Set Up- Drop



Block 15 Post Test Item Picture- Drop



Extra #- Drop



SGS-CSTC Standards Technical Services Co., Ltd.
Xiamen Branch Testing Center Hardlines

Unless otherwise agreed in writing, this document is issued by the Company subject to its General Conditions of Service printed overleaf, available on request or accessible at <http://www.sgs.com/en/Terms-and-Conditions.aspx> and, for electronic format documents, subject to Terms and Conditions for Electronic Documents at <http://www.sgs.com/en/Terms-and-Conditions/Terms-e-Documents.aspx>. Attention is drawn to the limitation of liability, indemnification and jurisdiction issues defined therein. Any holder of this document is advised that information contained hereon reflects the Company's findings at the time of its intervention only and within the limits of Client's instructions, if any. The Company's sole responsibility is to its Client and this document does not exonerate parties to a transaction from exercising all their rights and obligations under the transaction documents. This document cannot be reproduced except in full, without prior written approval of the Company. Any unauthorized alteration, forgery or falsification of the content or appearance of this document is unlawful and offenders may be prosecuted to the fullest extent of the law. Unless otherwise stated the results shown in this test report refer only to the sample(s) tested and such sample(s) are retained for 30 days only.

Attention: To check the authenticity of testing / inspection report & certificate, please contact us at telephone: (86-755) 8307 1443, or email: CN.Doccheck@sgs.com

No.31 Xianghong Road, XiangAn Torch Industrial Zone, Xiamen, Fujian Province, China 361101 t (86-592) 5766537 f (86-592) 5766460 www.sgsgroup.com.cn
中国·福建·厦门·火炬(翔安)产业区翔虹路31号 邮编: 361101 t (86-592) 5766537 f (86-592) 5766460 e sgs.china@sgs.com

TEST PICTURES {continued}

NA	NA	NA
Block 21 Test Set Up	Block 21 Post Test Item Picture	Extra #

NA	NA	NA
Block 22 Test Set Up	Block 22 Post Test Item Picture	Extra #

NA	NA	NA
Block 23 Test Set Up	Block 23 Post Test Item Picture	Extra #

NA	NA	NA
Block 24 Test Set Up	Block 24 Post Test Item Picture	Extra #



Unless otherwise agreed in writing, this document is issued by the Company subject to its General Conditions of Service printed overleaf, available on request or accessible at <http://www.sgs.com/en/Terms-and-Conditions.aspx> and, for electronic format documents, subject to Terms and Conditions for Electronic Documents at <http://www.sgs.com/en/Terms-and-Conditions/Terms-e-Documents.aspx>. Attention is drawn to the limitation of liability, indemnification and jurisdiction issues defined therein. Any holder of this document is advised that information contained hereon reflects the Company's findings at the time of its intervention only and within the limits of Client's instructions, if any. The Company's sole responsibility is to its Client and this document does not exonerate parties to a transaction from exercising all their rights and obligations under the transaction documents. This document cannot be reproduced except in full, without prior written approval of the Company. Any unauthorized alteration, forgery or falsification of the content or appearance of this document is unlawful and offenders may be prosecuted to the fullest extent of the law. Unless otherwise stated the results shown in this test report refer only to the sample(s) tested and such sample(s) are retained for 30 days only.




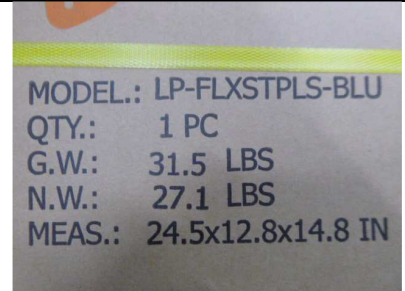


Attention: To check the authenticity of testing / inspection report & certificate, please contact us at telephone: (86-755) 8307 1443, or email: CN.Doccheck@sgs.com

TEST PICTURES {continued}

NA	NA	NA
Block 25 Test Set Up	Block 25 Post Test Item Picture	Extra #

POST TEST PICTURES

Isometric views of the box should be taken as called out in first two picture spots. An exploded BOM view should be added to the third slot. Additional pictures of damage should have locations noted, size of damages measured, and written in text box below them.

		
ISO #1 Side 1/2/5	ISO #2 Sides 3/4/6	Exploded BOM View
		
Extra #	Extra #	Extra #



SGS-CSTC Standards Technical Services Co., Ltd.
Xiamen Branch Testing Center Hardlines

Unless otherwise agreed in writing, this document is issued by the Company subject to its General Conditions of Service printed overleaf, available on request or accessible at <http://www.sgs.com/en/Terms-and-Conditions.aspx> and, for electronic format documents, subject to Terms and Conditions for Electronic Documents at <http://www.sgs.com/en/Terms-and-Conditions/Terms-e-Documents.aspx>. Attention is drawn to the limitation of liability, indemnification and jurisdiction issues defined therein. Any holder of this document is advised that information contained hereon reflects the Company's findings at the time of its intervention only and within the limits of Client's instructions, if any. The Company's sole responsibility is to its Client and this document does not exonerate parties to a transaction from exercising all their rights and obligations under the transaction documents. This document cannot be reproduced except in full, without prior written approval of the Company. Any unauthorized alteration, forgery or falsification of the content or appearance of this document is unlawful and offenders may be prosecuted to the fullest extent of the law. Unless otherwise stated the results shown in this test report refer only to the sample(s) tested and such sample(s) are retained for 30 days only.

Attention: To check the authenticity of testing / inspection report & certificate, please contact us at telephone: (86-755) 8307 1443, or email: CN.Doccheck@sgs.com

No.31 Xianghong Road, XiangAn Torch Industrial Zone, Xiamen, Fujian Province, China 361101 t (86-592) 5766537 f (86-592) 5766460 www.sgs.com.cn
中国·福建·厦门·火炬(翔安)产业区翔虹路31号 邮编: 361101 t (86-592) 5766537 f (86-592) 5766460 e sgs.china@sgs.com

POST TEST PICTURES {continued}

<p>Extra #</p>	<p>Extra #</p>	<p>Extra #</p>
	<p>NA</p>	<p>NA</p>
<p>Extra #</p>	<p>Extra #</p>	<p>Extra #</p>

END OF REPORT



SGS-CSTC Standards Technical Services Co., Ltd.
Xiamen Branch Testing Center Hardlines

Unless otherwise agreed in writing, this document is issued by the Company subject to its General Conditions of Service printed overleaf, available on request or accessible at <http://www.sgs.com/en/Terms-and-Conditions.aspx> and, for electronic format documents, subject to Terms and Conditions for Electronic Documents at <http://www.sgs.com/en/Terms-and-Conditions/Terms-e-Documents.aspx>. Attention is drawn to the limitation of liability, indemnification and jurisdiction issues defined therein. Any holder of this document is advised that information contained hereon reflects the Company's findings at the time of its intervention only and within the limits of Client's instructions, if any. The Company's sole responsibility is to its Client and this document does not exonerate parties to a transaction from exercising all their rights and obligations under the transaction documents. This document cannot be reproduced except in full, without prior written approval of the Company. Any unauthorized alteration, forgery or falsification of the content or appearance of this document is unlawful and offenders may be prosecuted to the fullest extent of the law. Unless otherwise stated the results shown in this test report refer only to the sample(s) tested and such sample(s) are retained for 30 days only.

Attention: To check the authenticity of testing / inspection report & certificate, please contact us at telephone: (86-755) 8307 1443, or email: CN.Doccheck@sgs.com

No.31 Xianghong Road, XiangAn Torch Industrial Zone, Xiamen, Fujian Province, China 361101 t (86-592) 5766537 f (86-592) 5766460 www.sgsgroup.com.cn
中国·福建·厦门·火炬(翔安)产业区翔虹路31号 邮编: 361101 t (86-592) 5766537 f (86-592) 5766460 e sgs.china@sgs.com

Member of the SGS Group (SGS SA)